



Newsletter

Volume XXVI No.12

June 2010

www.glendalequiltguild.org



GENERAL MEETING

WEDNESDAY, June 09, 2010 6:30 PM

"The Batty Lady"

This month the Glendale Quilt Guild is pleased to welcome **Alicia Campbell, "The Batty Lady"**. Alicia's specialty is batting and she is going to tell us everything we ever wanted to know about it.

The things that will influence your batting choices include:

1. How thick or puffy do you want the quilt to be?
2. Will this be a hand or a machine quilt?
3. How will this quilt be used?

Alicia will discuss the different types of batting; everything from cotton and polyester to wool, silk, alpaca, and even bamboo. Your product choice will affect the look and feel of your quilt. Alicia will have samples so you can see and feel the different types of batting in a "finished" product. She welcomes any questions you may have about batting materials. You will also have the opportunity to purchase batting by your favorite manufacturers including: Airtex, Fairfield, Hobbs, Mountain Mist, and Quilters Dream.

Mark your calendar. You don't want to miss this meeting and the opportunity to talk to the **"Batty Lady"**. This is your chance to have all your batting questions answered. Let Alicia keep you from going **"batty"** as you try to pick the perfect batting for your next project.

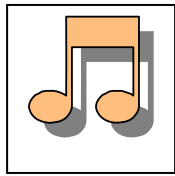
We will also install the new officers for the coming year. Come and meet the dedicated people who have agreed to take on the challenge of serving you and the Guild.

Barbara Gibson

Fat Quarter Draw at the General Meeting!

The theme is **"Batik"** fabrics. (Maximum of 5 & only 100% cotton, please.)

The President's Block



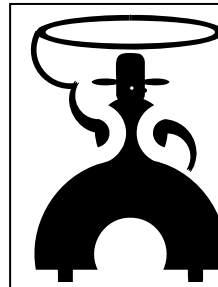
So Long, Farewell, Auf Wiedersehen, Goodbye.....

My dear friends, where did the past two years go? As they say, time flies by when you are having fun, and I vouch for that! I was blessed with such a great group of gals the past two years, who constantly gave their all for the guild. How can I begin to thank the general membership for all their support in all the guild's endeavors? Our past two quilt shows were most spectacular and profitable, and again only possible with loving and giving members to fulfill these big commitments. You have to know the good feeling I receive each meeting when I look out and see our attendance increasing with old and new friends! Yes, "it's a good thing!" Our quilt guild is full of role models and awe-inspiring people. There are a few who stand out because of their energy, their enthusiasm, and willingness to share with others. Our incoming President, Barbara Gibson, is one these individuals. Together with her newly elected board, I am confident to see great things in our future. Please, support this great new team. I will proudly recognize the past and incoming board and committees at the June meeting. Be there to celebrate, congratulate, and view our historian albums provided by **Nancy Wagner** and **Harriet Sartinsky**.

As you know, I'll be off on a new "trail" as chair of the 2011 quilt show, Quilts of the Wild West! I am so excited and happy to have at my side partner, **Sharon Bishop**. You saw her performance as Vice President, our guild could not be more fortunate for her endless devotion of talent and time, a true buckaroo! Sharon and I will be riding the range as Sheriff and Deputy, to make gold rush history. So cowboy up - we will

welcome a stampede of helping hands to walk the line for a corral of fun!

XXOO from my **Achy, Breaky Heart,**



Heidi



Goodbye, Old Board Members!

Congratulations! **Your New 2010-2011 Board**

President	Barbara Gibson
Vice President	Mary Ann Kroening
Recording Secretary	Frances Brannon
Corresponding Secretary	Sharon Bishop
Treasurer	Margie Emmons
Parliamentarian	Nan Maples
Programs	Corinne Gurney
Workshops	Joni Kellam
Membership	Barbara Stuart
Newsletter Editor	Karen Waller
Quilt Show Chair 2011	Heidi St. Royal

General Meeting

Wednesday, July 17, 2010

Mark your calendars for our

"Fallen Warrior Project night"

Bring 100% cotton fabric, a sewing machine & basic sewing supplies. Come join us for a fun evening & let's make a difference with this worthwhile project!

Future Programs & Workshops

JULY 14, 2010, WED.

NEW BOARD ~ PROGRAM TBD

JULY 17, 2010, SAT. GUILD WORKSHOP

“HOME OF THE BRAVE” QUILT PROJECT

To sign up for a workshop, please contact

Mary Ann Kroening 818-249-8237 or
kroeningj@sbcglobal.net

Watch for more
programs & workshops
to be announced in
2010 – 2011!

MEETINGS

* * *

BOARD MEETING

Thursday, June 03, 2010

6:30 PM

At Heidi St. Royal's Home

* * *

GENERAL MEETING

Wednesday, June 09, 2010

Social hour 6:00 PM

Meeting 6:30 PM

Glendale Library

* * *

LOVING HANDS

** No Meeting in June **

* * *

1st SHOW MEETING

Tuesday, July 06, 2010

Location: TBA

* * *

WE NEED MORE QUILTS

Challenge yourself, challenge your friends, challenge your entire quilt guild to make a **Priority: Alzheimer's Quilt**. It's great fun to make a small project for a change and you're helping a great cause. Your donated quilts are either auctioned or sold to raise money for the AAQI. All profits fund Alzheimer's research. If every other person reading this made just one quilt we'd meet our goal. OK, count off!

Courtesy: Esther Norbet

www.alzquilts.org/madoqu.html



Hospitality

If your name begins with

F to **K**



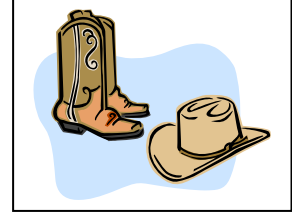
It's your turn to bring refreshments.

Remember, fruit and vegetables are always appreciated by those who are vegetarian.

2011 Quilt Show



~ 2011 Show Theme ~ Wild, Wild West!



The first Show Committee meeting will be held on Tuesday, July 6th.
Mark your calendars to join in planning for next year's show. More info to come soon.
See Heidi or Sharon for more details.

"Great Big Bag" Workshop

Beginner Level

Requires: Familiarity with use of Walking Foot on your machine
Useful, but Not Required: Ability to produce bias binding before class
Instructor: Nan Maples Phone: (626) 449-3132

Fees: \$20

Pattern REQUIRED
Pair of Dowels REQUIRED
Bottom Board REQUIRED

SUPPLY LIST

YARDAGE

Pre-Quilted Fabric

2 yds * front
2 yds * back
OR
2 yds * commercial quilted fabric

Binding Fabric

Color Coordinated

5/8 yd

1 Great Big Bag only

PREPARATION BEFORE CLASS

If you already know how to do this, you may make approximately 240 inches of 2" wide BIAS BINDING. 1 bias cut = about 31 inches in length. Make about 8 bias cuts, 2 inches wide. Join bias strips together as you would for binding strips.

* = Make sure the store cuts the fabric straight (exactly perpendicular to the selvedge).

SUPPLIES

Thread to match your chosen Binding fabric. (Fill 1 or 2 bobbins)

Walking Foot **VERY IMPORTANT - You must have one.**

Know that it fits your machine, how to install it & how to use it.
Screwdriver for your machine

Rotary Cutter

24" Acrylic Ruler Cutting mat for cutting bias binding only.

Pins .5mm (my favorites [.4mm] will bend in this project)

Other basic sewing supplies:

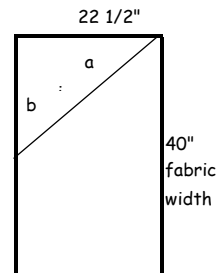
- A clean machine
- A **new** 80/12 sewing needle in your machine
- Your machine's instruction manual
- Your electrical cord and foot pedal
- Large fabric scissors (like dressmaker)**, sewing scissors, seam ripper, awl, etc.
- Heavy duty (sturdy) hand sewing needle, needle threader, thimble

5/8" diameter wood dowels 2 per bag Available at OSH or any similar store.

Dimensions: 24-25" long **To be delivered at class**
Bamboo or any other suitable material (support a lot of weight) may be used as well

light weight, stiff bottom board Must be able to support a lot of weight

Dimensions: 9 1/2" X 23 1/2" 1 per bag Available at OSH or any similar store.
To be delivered at class



BOARD & STANDING COMMITTEES

Executive Board Members 2010-2011

President	Heidi St. Royal	818-841-3451
Vice President	Sharon Bishop	323-254-6045
Recording Secretary	Susan Edwards	818-790-2214
Corresponding Secretary	Corinne Gurney	661-267-2970
Treasurer	Margie Emmons	818-249-5378
Parliamentarian	Nancy Mraz	818-890-3337
Program Chair	Barbara Gibson	818-768-3052
Assistant Program Chair	Kimberly Smith	818-352-1136
Workshop Chair	Mary Ann Kroening	818-249-8237
Assistant Workshop Chair	Alice Turner	818-248-4966
Membership Chair	Frances Brannon	818-241-6507
Assistant Membership Chair	Dovey Kapoh	323-225-1891
Newsletter Editor	Sandy Bradfield	818-636-5080
Quilt Show Chair 2010	Caren Ryan	626-335-9351
Quilt Show Chair 2011	(OPEN)	
Advisor	Alice Smith	626-796-2332

Extended Board Members

Equipment/Inventory	Sharon Bishop	323-254-6045
Historian	Harriet Sartinsky	818-249-7304
Hospitality Chairs	Gloria Flores & the Las Pulgas Mini Group	626-281-4306
Co-Librarian	Crystal Dudley	818-249-2859
Co-Librarian	Lettie Williams	818-241-5350
Philanthropy	Doralee Dohnel	661-252-6619
Publicity	Brandi Nalley	818-541-9983

Standing & Special Committee Chairs

Block of the Month	Pat Rollie	323-227-4707
Loving Hands	Pat Grim	818-243-9672
Telephone Tree	Esther Norbut	818-249-4742
Welcoming	Loretta Bradley	323-661-9155
Show & Tell	Birgit Siegel	818-506-6520
Website Liaison, E-mail	Melinda Helscher	818-353-1405
S.C.C.Q.G. Representative	Sharon Bishop	323-254-6045
Trips	Judy Sellers	818-248-4082
Printer Liaison	Nan Maples	818-849-6490

Special Announcement:

The **Guild and Show budgets for 2010-2011** will be presented for approval at the June membership meeting. Once the proposed budget has been reviewed by the Executive Board and recommended for approval by the general membership, advance copies are available from **Margie Emmons**.

Notes from the Judging Room

by Nan Maples

"Straight lines should be straight" is a constant refrain from the judges. This means that if you attempt to execute a straight seam, it shouldn't wobble or curve. They get their faces right down in the same plane as the quilt (which is usually lying on a table) and sight down those lines as if they were aiming a rifle. The same applies to quilting lines. If your lines wobble or meander, it should appear to the judges that it was intentional. Straight seam lines contribute to a quilt lying flat. Some judges will lump "lying flat" into the "straight lines should be straight."

Do the borders and bindings lie flat, or are they wavy? Does the quilt bunch or bubble in the middle? Flat is what they're looking for. At Glendale, a quilt will always be evaluated lying flat on a horizontal surface that supports the entire quilt. The judges may also ask for it to be held up vertically as if it were hung. Some other shows judge the quilts after they are hung. There are lots of things that contribute to a quilt not hanging or lying flat, but blocking can correct many of these issues. Look for some good instruction on blocking, and pay attention to accurate piecing and pressing.

Did you know . . . To create a **"fat quarter"** the fabric is cut in half along the width of the fabric and then along the length so you end up with 4 squarish pieces, approx. 50cm x 56cm or 18" x 23"? A fat quarter will only have one edge that has a selvage.

A **"skinny quarter"** is achieved by cutting along the width of the fabric only. So, now you have 4 long, thin rectangular pieces that have a selvage on the 2 narrow edges. These pieces will be approx 25cm x 112cm or 9" x 44".

"Fat eighths" follow the same principle. By cutting a fat quarter in half, along the width of the fabric, so both pieces still have one edge with a selvedge, you create an eighth of a metre or yard of fabric. A fat eighth will measure approx 25cm x 56cm or 9" x 23".

For more tidbits: www.patchwork-and-quilting.com/quilting-fabric.html#collecting

~ Membership ~

Welcome New GQG Members!

Ann Kauwe 4564 Jessica Dr, Los Angeles CA
90065 (323)255-2032 ann.kauwe@att.net

BD: July 14

Eileen Manus 822 E. Wilson Ave., Glendale CA
91206 (818) 242-0924 eileenmanus@yahoo.com

BD: Feb 4

Aviva Nizani 1872 Caminito de la Montana,
Glendale CA 91208 949-300-1541

avivanizani@gmail.com BD: Mar 23

Alletta Parker 4626 Palmero Drive, Los Angeles
CA 90065 (323) 254-5098 BD: Jan 22

Olivia Rodriguez 3594 Verdugo Vista Terrace, Los
Angeles CA 90065 (323) 258-6595

olivia139@juno.com BD: Oct 16



Happy Birthday



June 2010

Rasa Read	6/01
Katherine Ashdale	6/05
Betty Fisher	6/06
Barbara Gibson	6/06
Ruth Sievert	6/06
Eileen Givens	6/09
Brandi Nalley	6/09
Heidi St. Royal	6/09
Linda Bever	6/10
Kimberly Smith	6/12
Christina Sandberg	6/13
Lisa Burroughs	6/14
Rose Glaser	6/14

Sandy Bradfield	6/16
Susan Van De Vyvere	6/16
Marita Eatherly	6/19
Patti Sparks	6/24
Ramona Nale	6/26
Margaret Shuler	6/26
Ann Meuse	6/28
Sarah Turner	6/30



Loving Hands

Loving Hands WILL NOT MEET in June!

Donations of 100% cotton & batting 40 x 44 or larger are welcome. We are also looking for people to quilt or tie some of our finished tops & will bring the tops, batting & backs to the next meeting for you. Lunch is provided.

Mini groups, let us know in advance so we can bring enough. **See you in July!**

Pat Grim

Sunshine &

Get Well Soon Wishes:

Linda Bennett, owner of Quilt 'n Things who was in a serious automobile accident



6

~ From the Library ~

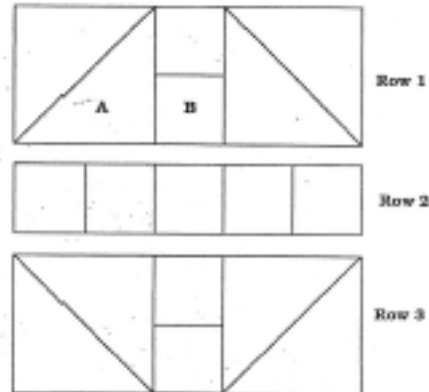
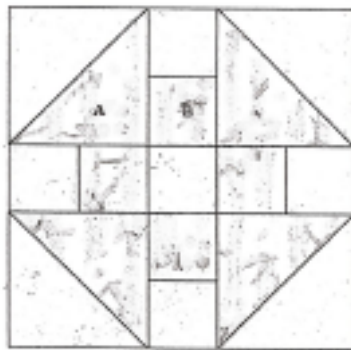
Due to the loss of our storage area, the GQG library will only be accepting checked out books until a complete inventory can be taken and a new procedure has been developed.

Lettie & Crystal

Block of the Month

June 2010

Hole in the Barn Door



Block

FINISHED SIZE:
 12" square

TYPE: Modified 9-patch

TEMPLATES: 2 (A and B)

PIECES PER BLOCK: 17

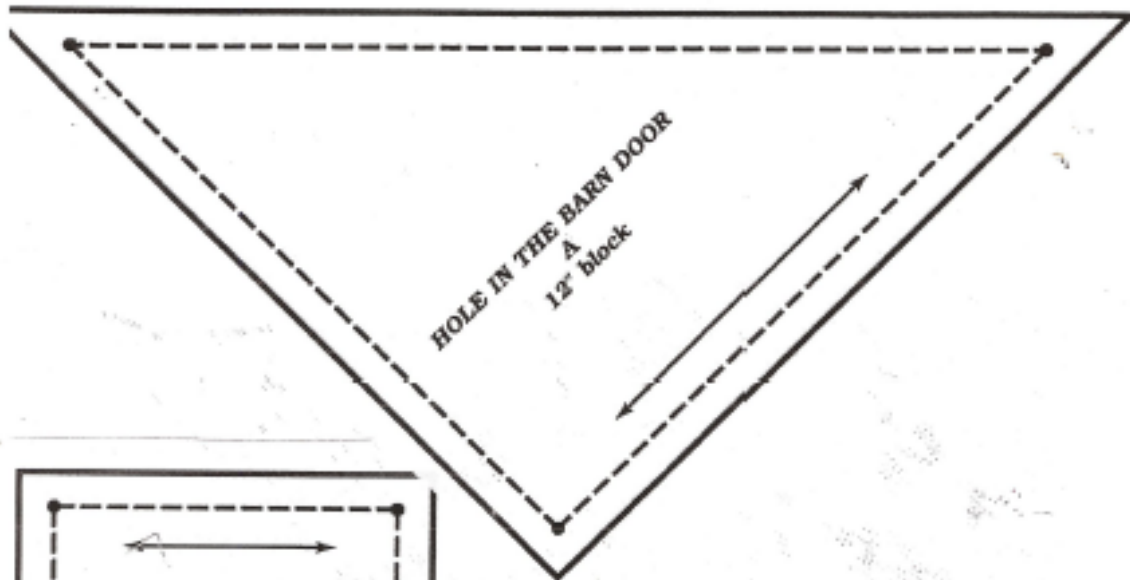
Triangle A: 4 beige print
 4 scrap fabric

Square B: 5 beige print
 4 scrap fabric

BLOCK ASSEMBLY: Join 1 beige print A to 1 scrap A. Repeat. Join 1 beige print B to 1 scrap B. Join A/A unit, B/B unit, and A/A unit to make Row 1. Repeat for Row 3.

Join 3 beige print Bs and 2 scrap Bs, alternating colors, for Row 2.

Join Rows 1, 2, and 3.



Please use Western Motif Fabric!!!!

If you have any questions call
 Pat Rollie at 323-224-8207

Have fun!!!!

MEETING REPORTS

Glendale Quilt Guild
Executive Board Meeting
Judy Sellers' Residence
May 06, 2010

Present: Judy Sellers, Heidi St. Royal, Sharon Bishop, Caren Cooke Ryan, Margie Emmons, Nan Maples, Barbara Gibson, Frances Brannon, Corinne Gurney, Nancy Mraz, Harriet Sartinsky, Susan Edwards

Heidi opened the meeting at 6:30 pm thanking Judy for hosting the meeting. The minutes were approved as printed in the Newsletter. Margie gave the treasurers' report and announced that most of the bills for the show have been paid. All outstanding bills must be turned in by May 30th. The budget committee meeting scheduled for May 11th, 7 pm, Heidi's house is involving as many people as possible. One goal is to define the categories clearly and label them appropriately. Regarding charging items, Harriet will investigate a single payer system versus PayPal.

Sharon reported that, at the SCCQG meeting, the California Department of Veterans Affairs is requesting quilts 65" x 80" and wheel chair or lap size for the new residence they are opening. Sharon thanked Mary Ann Kroening for attending the April SCCQG meeting. The next SCCQG meeting is in San Clemente featuring a "meet the teachers" program.

Barbara Gibson discussed the up coming programs. One speaker she contacted had a full schedule, however Marcia Stein is available. So far, for the June workshop, Nan Maples' "Really Big Bag" class, 15 members have signed up. Nan can take as many students as the room can hold.

Current membership of the GQG is 217 stated Frances Brannon. The new member's tea was a huge success and a lot of fun. Susan Edwards read the thank you note sent by Eileen Givens. Frances announced that the membership applications for next year are ready for distribution. The goal is for members to renew membership in July, so that the roster can be prepared and distributed in September.

The first meeting of the 2011 Show committee will be July 6th.

The slate of elected officers for next year has been prepared and the vote will be next week at the May General meeting. A few committee chairs are still needed. The most pressing need is a Newsletter editor.

The equipment chair announced that officer and committee procedure books should be passed on to the appropriate person rather than being returned to storage. We are still missing one cash box and 2 ladders that were lost at the 2010 show.

For philanthropy, it was moved, seconded and approved that a \$500 scholarship be given to Cal State LA Textile Department.

Judy Sellers is organizing the bus trip to Long Beach Quilt

Show, July 24th. The \$15 includes the bus ride and entrance fee. Western attire to advertise the 2011 show is suggested. Pay to reserve a space early because the bus fills up fast.

A big thank you was given to Nan Maples and the By-Laws committee for their hard work.

Unfortunately, we no longer have a storage space at the Glendale Central Library. All of our library book bins, hospitality supplies and quilt stands had to be removed. Thank you, Mary Ann Kroening and Sharon Bishop for moving the supplies to the storage unit on short notice. This means that for every meeting someone will have to carry the hospitality supplies, quilt racks and library books. Hospitality has been notified.

How to handle the library without lugging 6 extremely heavy bins to every meeting was questioned. Corinne Guerny suggested a new procedure for the library where a member requests a book and the librarian brings that book to the meeting. Until an updated library book list and a procedure is established, the library will only be accepting checked out books.

The next board meeting will be June 3rd 6 pm, a pot luck at Heidi's home. Outgoing board members will bring a dish for the potluck. The meeting was adjourned at 8:30 pm.

Respectfully submitted,
Susan Edwards
Recording Secretary

Why Should I Have an Appraisal?

If you do not have an **Insurance Value** appraisal on your quilt & it is not specifically insured, & it is lost, stolen or destroyed, your homeowner's insurance will probably only reimburse you the value of an ordinary blanket. With a written appraisal, your insurance company can insure under a special Fine Arts rider. Also, if you ship your quilt to a show, the shipper will require a written appraisal to insure the quilt for its true value.

A **Donation Value** appraisal is the amount acceptable to the IRS & is used when donating a quilt to a nonprofit corporation such as a museum, etc. It may be deductible on your income tax.

Very few **Fair Market Value** appraisals are done now. Their value is only good under specific conditions, between a buyer & a seller & for a given date & time.

Excerpt from Marilyn Withrow's
"Just What Is an Appraisal Anyway?"
Professional Quilt Appraiser
mmw@marilynquilts.com

MEETING REPORTS CONT'D.

Glendale Quilt Guild General Meeting Glendale Central Library May 12, 2010

The meeting was called to order at 6:30 by the president, Heidi St. Royal. The minutes were approved as printed in the Newsletter. Margie Emmons read the treasurers' report. There were no questions. Corinne Gurney announced who she sent cards to.

Nancy Mraz, parliamentarian, introduced the nominees for next years slate of officers. Everyone was handed a ballot when they signed in at the membership desk. She asked if there are any nominees from the floor. Hearing none, the slate stands. A motion was made to elect the officers as listed on the ballot. It was seconded, and by voice vote, approved.

Programs chair, Barbara Gibson announced that next month the "batty lady" Alicia Campbell will give a short program on batting after the new officer's induction. In July we will have the annual summer pot luck, and in August by popular vote we will have Anne Copeland returning to appraise one quilt item per member.

Caren Ryan presented the 2010 Show viewers choice winners their ribbons: Corinne Gurney, wearable, and Ko Nakamura, quilt. Corrine Gurney announced the winner of the spa drawing, Charlotte Rose, who entered a quilt in the show, took a class and stayed at the hotel.

Heidi introduced Patty Karmic from the Autry Museum who welcomed us to hear the talk at the Wells Fargo Theater on June 5th, 2 pm. The curator will be talking about the stunning, exquisite silk quilt that is in the "Homelands" exhibit.

Frances Brannon announced that tonight 105 members signed in and there are no new members or other guests. Door prizes were provided by Ricky Tims and the guild. The booby prize was provided by Pat Hayden and won by Ester Norbut.

Pat Grim announced that Loving Hands is cancelled this Friday.

Philanthropy chair, Doralee Dohnel presented the board approved recommendation that we donate \$500 for a scholarship to Cal State La Fashion and Textile Institute. A motion was made, seconded and carried.

The bus trip to Long Beach show is filling up fast. Members have first priority, then, if room, friends will be accepted. Judy Sellers is collecting the \$15 which includes the entry fee.

Heidi announced the loss of the storage closet and the need to carry all hospitality supplies, quilt racks and library books to every meeting. Until a new procedure can be implemented, the library will only be accepting returned

books.

For next month, to kick off next years show theme, the block will be Hole in the Barn Door using western theme fabric. This month's block was a lot of hard work for these gorgeous tropic flowers. Names were drawn. One after another, until 9 names were drawn for the 19 blocks! Everyone who made a block got to take someone else's block home. Two blocks each except for 2 people who got 3 blocks each.

Barbara Stuart announced that the vouchers are ready for distributions. She will bring them next meeting. Sharon Bishop called for donations of quilts for the new VA residence opening June 14th. And Heidi asked members to support the new president, Barbara Gibson. There is a need for a Newsletter editor. Karen Waller stepped forward to take this position.

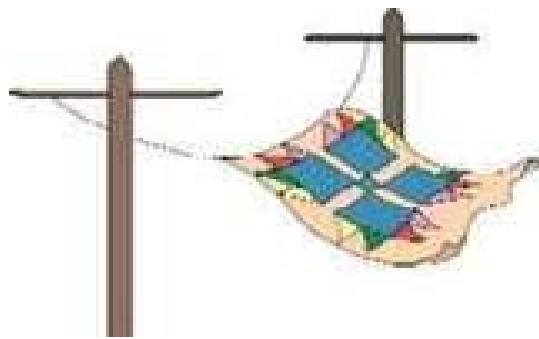
The fat quarter draw was won by Selma Paul.

After show and tell and the break, Barbara Gibson introduced the speaker, Ann Turley, with her no rules approach and she is a certified quilt judge. Tonight she bought a handout listing everyday inexpensive items. She weaved a story about having an idea for a quilt and going out shopping for supplies. Not at a quilt store but to hardware, office supply and grocery store where she bought some broccoli. On the stage was a large table displaying all her tricks of the trade which she most entertainingly described.

She also showed some of her quilts.

The meeting was adjourned at 8:55 pm.

Respectfully submitted,
Susan Edwards
Recording Secretary



CALENDAR OF EVENTS/ MEMBER NEWS

June 5-6, 2010

FantaSea of Quilts Quilt Show
SOKA University, Aliso Viejo, CA
Info: www.beachcitiesquilters.org

July 11-15, 2010

Camp Watch A Patcher
At Vanguard University, Costa Mesa, CA
Info: www.campwatchapatcher.org

August 21-22, 2010

Yorba Linda Quilt Daze VIII
Yorba Linda Community Ctr., Yorba Linda, CA
Email Info: ylquiltshade@aol.com

Reminder: Space is still available for the **Great Big Bag** workshop taught by GQG member Nan Maples on Saturday June 12, 2010 from 10 am to 3 pm at the library. A bargain at only \$30.00.

Email or call Mary Ann Kroening 818-249-8237 or kroeningj@sbcglobal.net to reserve your spot for this fun class.

Long Beach International Quilt Festival July 23 – 25, 2010

Online enrollment began April 6th & classes will begin on July 22nd. For a class catalogue, check out the website: <http://www.quilts.com>

They are also looking for volunteers to work the show. If interested, contact: Terri Winsauer, Volunteer Asst. Coordinator at Email: worktheshow@quilts.com or on their website after May 20th: www.quilts.com/worktheshows/LongBeach

Don't forget to register for the **GQG BUS TRIP!** See **Judy Sellers** to reserve a spot before we fill the whole bus! **A bargain at only \$15.00!!!**

Request for Quilts

The California Department of Veterans Affairs will be dedicating a new Veterans Affairs Residential care center on Flag Day, June 14, 2010 at 10 am and are requesting donations of quilts. The new center, located on the grounds of the Federal Building across from the VA Cemetery in West Los Angeles, will have over 300 beds designated for assisted living, skilled nursing care, and Alzheimer care. Quilts for bed, lap, and wheelchair use are needed for both male and female veterans.

The California Home of the Brave Quilt Project's Fallen Heroes Quilt, which contains the names of all of California's losses in Operation Enduring Freedom and Operation Iraqi Freedom, will be displayed at the ceremony which is open to the public. The master of ceremonies will be long time local newsman Stan Chambers.

In addition to this immediate need, they are looking for quilts on an ongoing basis to be placed in welcome bags to be given to veterans at the time of their admission to the program. They are also planning on having "quilting days" at the facility in the future and will keep us updated on the plans for this.

If you have quilts that you would like to donate for the June 14 ceremony, you can bring them to the Guild meeting June 9. For more information please contact **Sharon Bishop**.

Announce special events in the next newsletter. Email info, dates & times to the New Editor: Karen Waller at waller8112@roadrunner.com



EDITOR'S CORNER



Thank You!
It was an honor and a pleasure to serve you as Newsletter Editor.

Two years have passed since my first issue & I find myself composing the last one. What a great job it has been; full of challenge & immense satisfaction. I have made wonderful new friends & developed special relationships during my term. Please present Karen Waller with the same loving support you have show to me.

Once again, I thank you from the bottom of my heart for your articles, pictures & friendship as I send my final issue to print.

See you at the meetings!

Sandy

AFFILIATE HAPPENINGS & MEMBER NEWS

■ **The Autry National Center** is offering **FREE** admission every 2nd Tuesday of the month until August 22nd to promote the new exhibition "**Home Lands: How Women Made the West**". Of special interest, is a 19th century log cabin quilt, handcrafted in silk. Be sure to take advantage of this special offer & take a look at this fabulous piece of history.

■ Check out the **May 2010** issue of **American Quilter Magazine** for a 3-page article on the "**Young Piecemakers Guild**". There are some great pictures of Renee & some of her kids working on their quilts. Remember when they came to our general meeting?

■ **Pre-wash fabrics with one cup of white vinegar added to wash water to help set colors.** This is especially important with Batiks and hand-dyed fabrics.

■ Hidden somewhere in the pages of this newsletter is a butterfly. The prize winner will be announced at the next General Meeting. The first one to show Sandy at the general meeting will win a prize.

■ **Did you know . . . "the secret to creativity is knowing how to hide your sources."** **Albert Einstein** (This may be very important for that special quilt you designed for competition!)



GQG Welcomes Our New Affiliate:

Sewing Machine Warehouse

16214 Nordhoff St., North Hills, CA 91343

(818) 332-7777 www.kneedle.com

Open 9:30 a to 6PM

Sewing machines, repairs, accessories, classes & they offer a discount for GQG members. too.



Don't forget to recycle your old Newsletters! Let's save those trees!

Did you know . . . you can keep up with all your GQG friends on Facebook?

It's really easy. Just go to our website at www.glendalequiltguild.org and click on the link "**Visit us on Facebook**".

ATTENTION AFFILIATES:

We have space for you to make announcements, offer specials & keep the Guild informed about your business. Contact us & we will be happy to distribute our information to our membership.

Print a copy of this newsletter in glorious **COLOR** by going to our website at www.glendalequiltguild.org and clicking on the link named: **Current Newsletter!** Only black & white copies are available by mail.

GENERAL GUILD INFORMATION

VOLUME XXVI NO. 12

www.GlendaleQuiltGuild.org

Glendale Quilt Guild, Inc. is a non-profit corporation. The purpose is to contribute to the knowledge of, and to promote the appreciation of, fine quilts, quiltmaking and collection; to gain knowledge of quilt techniques, patterns, history and quiltmakers through educational meetings, travel and friendship.

Meetings are held the 2nd Wednesday of every month at the

Glendale Central Library Auditorium, 222 East Harvard Street, Glendale, California

Social Time: 6:00 – 6:30 PM. Meeting begins at 6:30 PM. Guest fees: \$5.00 per meeting.

Membership dues are payable July 1 and are delinquent at the end of the August General Meeting.

Active Members: \$30.00, Seniors (62+ years): \$25.00, Affiliates: \$35.00, Newsletter Only: \$30.00

The newsletter is a monthly publication of the Glendale Quilt Guild. Members are invited to submit items of interest for publication at the General Meeting or by E-mailing Sandy Bradfield at: sandyb@usa.com.

SUBMISSION DEADLINE IS THE MONDAY AFTER THE GENERAL MEETING.



AFFILIATES

AFRICAN FOLKLORE EMBROIDERY

1928 Hill Drive
Los Angeles, CA 90041
Tel. 323.256.7985
www.afrembrodery.com

NEW MOON TEXTILES

1393 E. Washington Blvd.
Pasadena, CA 91104
Tel: 626-296-6663
www.newmoontextiles.com

SEWING STUFF / SO MANY QUILT BOOKS

1336-A Railroad Street
Paso Robles, CA 93446
www.sewmanyquiltbooks.com
(Shows & Internet only)

BETTY'S PHOTOS ON FABRIC

P.O. Box 9307
Rancho Cucamonga, CA 91707
Tel. 909.987.3341
www.bettys-photos-on-fabric.com

PATCHWORK PENGUIN

6245 Foothill Boulevard
Tujunga, CA 91042
Tel: 818-248-7390
www.patchworkpenguin.com

THRIFT ALLEY

314-A East Harvard Street
Glendale, CA 91205
Tel: 818-246-2294
www.alglendale.org

FRANK'S VACUUM & SEWING MACHINES

2145 Verdugo Boulevard
Montrose, CA 91020
Tel: 818-248-5411
www.franksvacuumsewing.com

QUILT 'N' THINGS

2411 Honolulu Avenue
Montrose, CA 91020
Tel: 818-957-2287
www.quiltntthings.com

MAYHALL'S SEWING CENTER

2252 Honolulu Avenue
Montrose, CA 91020
Tel: 818-249-2466
www.mayhallssewingcenter.com

THE QUILT EMPORIUM

4918 Topanga Canyon Blvd.
Woodland Hills, CA 91364
Tel: 818-704-8238
www.quiltemporium.com



You are invited to join us at our next meeting:

MEETING: WEDNESDAY, JUNE 9, 6:30 PM
GLENDALE CENTRAL LIBRARY • 222 E. HARVARD ST., GLENDALE
REFRESHMENTS: SEE PAGE 3

or contact us for more information:

P.O. Box 5366 • Glendale, CA 91221-5366

www.glendalequiltguild.org