



## GENERAL MEETING

**WEDNESDAY, April 14, 2010 6:30 PM**

*Sylvia Pippin*

**"Designs from Paradise"**

This month the **Glendale Quilt Guild** is honored to welcome one of quilting's "*super stars*"; internationally known designer, quilter, author and teacher *Sylvia Pippin*. Sylvia will tell us about her design process as she presents a trunk show of her beautiful quilts. Her stunning colorful designs feature the unique flora and fauna of Hawaii.

Sylvia learned sewing at a very early age from her mother, Kitty Pippin. While raising her family in Massachusetts, Sylvia studied tailoring and pattern making. She designed jackets with Japanese Yukatas and Seminole patchwork. With her family grown, Sylvia learned to quilt in the cramped quarters of a forty-foot sailboat. Her quilting took a tropical twist when she moved to Hawaii. "After co-authoring a book with her mother, she turned to teaching and designing patterns and fabric kits full time."

Now Sylvia lives on the island of Hawaii. When I spoke with her on the phone she talked about how wonderful it is to "live in paradise" and to have so much beauty for inspiration. Her Island features tremendous contrasts. The active volcano Kilauea pours molten red lava into the sea near black crusty fields of cooled lava flows. Marvelous dense rain forests surround the active volcano area and brightly colored birds and butterflies seem to be everywhere. It is truly a place to inspire the creative mind.

Sylvia's patterns combine appliquéd Hawaiian flowers and fauna with Japanese Sashiko and embroidery embellishments. Her designs draw from Tahitian and Hawaiian quilts, as well as Japanese textiles, Kimono and Polynesian tapa designs. Sashiko adds a dramatic element to her designs. The embroidery stitching adds detail and dimension.

Sylvia is the author of "[\*Paradise Stitched- Sashiko & Appliquéd Quilts\*](#)" and co-author of "[\*Asian Elegance: Quilting with Japanese Fabrics and More\*](#)".

Mark your calendar for this truly special program. Sylvia's quilts are incredibly beautiful and her appliquéd technique is **FLAWLESS**. You truly do not want to miss this opportunity to see and hear one of the masters of our craft.

*Barbara Gibson*

Fat Quarter Draw at the General Meeting!

The theme is "*Easter*" prints. (Maximum of 5 & only 100% cotton, please.)

# The President's Block



As I write this note, our 2010 Asian Odyssey will have come to an end, and what a time we had! Our next newsletter will share the many highlights of our show. Now I'm paying tribute to the fine job Caren Cooke Ryan did as chairperson of this huge endeavor. Her team spent endless hours and gave their all so that quilters went home after the show, heads and hearts full of techniques, enthusiasm for the new and different, and appreciation for the gift of outstanding instruction. Our 2010 celebration, however, is not about our own love of quilting, it's actually about a giant quilting bee, a gathering of quilters, quilts, techniques, and ideas that will excite and inspire you more than ever before. Our guild loves the interaction with already passionate quilters and feels strongly the need to expand our reach.

With that in mind, we will be on our way to our 2011 show, the quilters of tomorrow! I'm proud to say our guild reaches that goal! Our guild promotes quilting wherever it can. We get to see what we are making each meeting with our show-and-tell. All of this helps us plan what goes into our future plans.

I love the interaction with you passionate quilters and feel strongly about the need to expand our reach. Student quilters are the quilters of tomorrow. Our philanthropy and programs have shown this endeavor. Again, I'm proud to say our quilt team has spread the word about quilting in the community.

As we all know, quilters are the best gift givers in the world! We make quilts filled with our love and give them to the people we love. We raise funds and donate quilts to people who need comfort. If one of these quilts is special enough to wear a ribbon at a local quilt show, consider it icing on the cake!

Well, to sum it all up, does spring give you the urge to clean your house, wash your windows, and finish all those quilting projects you started

last winter? \_\_\_\_\_ (fill in the blank) No! Just let everyone know about the special art form that is quilting!

Congrats superstars!

Love, *Heidi*

## 2010-2011 Board Nominees

President	Barbara Gibson
Vice President	Mary Ann Kroening
Recording Secretary	Frances Brannon
Corresponding Secretary	Sharon Bishop
Treasurer	Margie Emmons
Parliamentarian	Nan Maples
Programs	Corinne Gurney
Workshops	Joni Kellam
Membership	Barbara Stuart
Newsletter Editor	Open
Quilt Show Chair 2011	Heidi St. Royal

## Future Board Meetings

(all at 6:30 pm)

**April 8** - Susan Edwards' home

**May 6** - Judy Sellers' home

**June – TBD** – pending new Board  
Heidi St. Royal's home

## General Meeting

**May 12, 2010**

Mark your calendars for a lecture  
by

**"Ann Turley"**

**"Why am I buying broccoli when all I  
want to do is Quilt?"**

**Come join us for a fun evening!**

## Future Programs & Workshops

MAY 12, 2010, WED.

ANN TURLEY

“WHY AM I BUYING BROCCOLI WHEN ALL I WANT TO DO IS QUILT?”

No WORKSHOP

JUNE 09, 2010, WED.

INSTALLATION OF OFFICERS & PROGRAM

ALICIA CAMPBELL – “EVERYTHING YOU NEED TO KNOW ABOUT BATTING”

JUNE 12, 2010, SAT.

NAN MAPLES

“REALLY BIG BAG” WORKSHOP

JULY 14, 2010, WED.

NEW BOARD ~ PROGRAM TBD

JULY 17, 2010, SAT. GUILD WORKSHOP

“HOME OF THE BRAVE” QUILT PROJECT

To sign up for a workshop, please contact

Mary Ann Kroening 818-249-8237 or  
[kroeningj@sbcglobal.net](mailto:kroeningj@sbcglobal.net)

## MEETINGS

### BOARD MEETING

Thursday, April 08, 2010  
6:00 PM

At Susan Edward's Home

\* \* \*

### GENERAL MEETING

Wednesday, April 15, 2010

Social hour 6:00 PM

Meeting 6:30 PM

Glendale Library

\* \* \*

### LOVING HANDS

Friday, April 09, 2010

10 AM until done

1038 E. Elmwood

Burbank

\* \* \*

### 2010 Show Wrap-up Meeting

Tuesday, April 27, 2010  
6:30 PM

Potluck Dinner at Judy Sellers' Home

## Sylvia Pippin Tropical Workshop

Sylvia Pippin will be giving a workshop for our Guild at the Glendale Public Library on THURSDAY April 15. Her tropical patterns are absolutely gorgeous. They are rich in color and the exotic flora and fauna of the islands. The project for the day will be her pattern “**Butterflies and Sashiko**”. Sylvia has kits available for \$45.00. You do not need to buy a kit to attend the class. Sylvia says this is one of her older patterns and has graciously agreed to allow students to work on their choice of her patterns. A supply list will be available at the next Guild meeting.

This class is filling very quickly. If you want to attend this special event please contact **Mary Ann Kroening** as soon as possible at **(818) 249-8237**. You do not want to miss this opportunity to learn from a master teacher. Supply lists are now available.



## Hospitality

If your name begins with

**R to Z**



It's your turn to bring refreshments.

Remember, fruit and vegetables are always appreciated by those who are vegetarian.

## 2010 Show Committee News



Dear GQG Members,

At this time I am in a calm state waiting for the excitement that is to begin March 19. It is hard to communicate how much time an effort has gone into this show. Our guild is honored to have a quilt show committee that has so much talent, intelligence, creativity, organizational skills, technological knowledge, finesse, negotiating ability, spirit of volunteerism etc. That is what it takes for a successful outcome. My thanks to the committee and TO ALL OF YOU who participated as volunteers, workshop attendees, quilt entrants, shoppers and fans. So I say sayonara, and look to supporting the upcoming event presented by Heidi, Sharon and their committee.

From the heart, **Caren Cooke Ryan**



*Thanks to all GQG  
Members!*

*We Did It!*

*From classes to kids' quilt to vendors & the fabulous  
quilt gallery . . . fun was had by all who attended  
the 2010 GQG Show!*

*A full montage of winning quilts will appear in next  
month's newsletter. Watch for it!*



### Prize Winners ~ Opportunity Quilt Ticket Sales

For selling at least 3 sheets, **Beth Hasenauer,Carolynn Hodapp, Victoria Johnson, Kris Kline, Kim Kelly, Jane Lai, Daniel Marlos, Ko Makamura, Selma Paul, Judy Sellers, Heidi St.Royal** win a 2010 Show pin.

For selling at least 6 sheets **Frances Brannon** and **Mary Ann Kroening** win a ticket into the Saturday Night Sampler class at the Show.

For selling at least 10 sheets **Barbara Gibson** and **Rasa Reid** win a Show tee shirt.

For selling at least 15 books, **Barbara Stuart** wins a ticket into the luncheon auction.

***Congratulations!***

And the grand prize winner, **Phyllis O'Connor** won a night at the Marriott during the Show.

## BOARD & STANDING COMMITTEES

### Executive Board Members 2009-2010

President	Heidi St. Royal	818-841-3451
Vice President	Sharon Bishop	323-254-6045
Recording Secretary	Susan Edwards	818-790-2214
Corresponding Secretary	Corinne Gurney	661-267-2970
Treasurer	Margie Emmons	818-249-5378
Parliamentarian	Nancy Mraz	818-890-3337
Program Chair	Barbara Gibson	818-768-3052
Assistant Program Chair	Kimberly Smith	818-352-1136
Workshop Chair	Mary Ann Kroening	818-249-8237
Assistant Workshop Chair	Alice Turner	818-248-4966
Membership Chair	Frances Brannon	818-241-6507
Assistant Membership Chair	Dovey Kapoh	323-225-1891
Newsletter Editor	Sandy Bradfield	818-636-5080
Quilt Show Chair 2010	Caren Ryan	626-335-9351
Quilt Show Chair 2011	(OPEN)	
Advisor	Alice Smith	626-796-2332

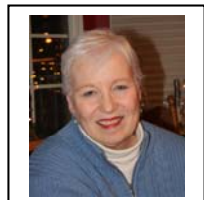
### Extended Board Members

Equipment/Inventory	Sharon Bishop	323-254-6045
Historian	Harriet Sartinsky	818-249-7304
Hospitality Chairs	Gloria Flores & the Las Pulgas Mini Group	626-281-4306
Co-Librarian	Crystal Dudley	818-249-2859
Co-Librarian	Lettie Williams	818-241-5350
Philanthropy	Doralee Dohnel	661-252-6619
Publicity	Brandi Nalley	818-541-9983

### Standing & Special Committee Chairs

Block of the Month	Pat Rollie	323-227-4707
Loving Hands	Pat Grim	818-243-9672
Telephone Tree	Esther Norbut	818-249-4742
Welcoming	Loretta Bradley	323-661-9155
Show & Tell	Birgit Siegel	818-506-6520
Website Liaison, E-mail	Melinda Helscher	818-353-1405
S.C.C.Q.G. Representative	Sharon Bishop	323-254-6045
Trips	Judy Sellers	818-248-4082
Printer Liaison	Nan Maples	818-849-6490

Due to space constraints in this issue of the newsletter, a complete list of winners will be available for review at the next Guild meeting.



## Quilt Show Winners

Best of Show	<i>Shelter Me</i> Pat Rollie - GQG
Best Hand Quilting	<i>Alice's Challenge</i> Anne Bagne - GQG
Best Machine Quilting	<i>Sunny with a Chance of Roses</i> Kay Pennington
Best Piecework	<i>Grape Day Parade</i> Florence Reisen - GQG
Best Appliqué	<i>Don't Eat My Chocolate Bunnies</i> Jill Safranek - GQG
Best Use of Color	<i>Stairway to Heaven</i> Sally Wright
Best Pictorial	<i>Man with a Red Pack</i> Lois Stelzer - GQG
Founder's Award	<i>Vintage Dreams</i> Alice Turner _ GQG
Electric Needle Other Techniques	No Awards No First Place Award
Holiday Quilt	<i>Christmas Tree of Life</i> Tina Curran – GQG
Two Person GQG	<i>Christmas Crossroads</i> Karin Crawford
Art Quilt	<i>Life's Detours</i> Mary Beth Kile – GQG
Show Theme	<i>Asian Dresden Bloom</i> Marva Packey – GQG
Traditional	<i>Cosmic Scraps</i> Rasa Read – GQG
Innovative	<i>2009 – A Space Odyssey</i> Sally Wright
True Miniature	No First Place Award
Two Person – non GQG	<i>Gateway to Istanbul</i> Don Beld
Celebration	<i>School's Out</i> Sally Wright
Friendship Group	<i>Scottie's On Parade</i> Muriel Carroll
Novice	<i>Little Dragons Everywhere</i> Theresa Humphrey

## ~ Membership ~

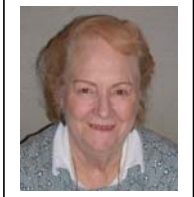
### Welcome New GQG Members!

**Marita Eatherly**, 3258 Brace Cyn Rd, Burbank, CA  
(818) 848-8541 Birthday: June 19

**Stephanie Horsley**, 3718 Mentone Ave #4, LA,  
CA 90034 [askrybe@aol.com](mailto:askrybe@aol.com) 310-880-0270

Birthday: March 14

Address change: **Melinda Helscher**, 1330 Riviera  
Dr, Pasadena, CA 91107 (818) 445-5406



**New Member Tea May  
2nd!** If you joined in the past  
year, watch for your invitation!  
Meet the Exec, Board & have  
lots of **FUN!** See you there!

### Happy Birthday!



#### April 2010

Lorelei Snee	4/04
Crystal Dudley	4/06
Karen Valderrama	4/08
Trudy Badovinac	4/10
Darlene Mezak	4/10
Lois Stelzer	4/11
Nancy Wagner	4/12
Diane Sullivan	4/13
Susan Fredericks	4/14

Barbara Dieges	4/18
June McNamara	4/18
Catherine Mullen	4/20
Minerva Preciado	4/21
Pat Akers	4/22
Margie Emmons	4/22
Catherine Euler	4/23
Suzanne Curtis	4/24
Francine Loomis	4/25
Karen Millman	4/26
Jean Giacomelli	4/28

## Loving Hands

**Loving Hands** will meet on **Friday, April 9<sup>th</sup>** from 10 AM until done. 1038 E. Elmwood, Burbank.

Everyone is welcome! We sew all day & serve lunch to all who come. Donations of 100% cotton & batting are always appreciated. Come help us meet our charitable goals by helping to make quilts for those in need. See you there!

**Pat Grim**

### *Pat Rollie's Shelter Me*



### ~ From the Library ~ Lettie & Crystal

[Loose Change, Quilts from Nickels, Dimes and Quarters](#)

By Claudia Platt & LeAnn Weaver

This new book honoring the memory of GQG member **Gail Powell** should please any quilter. It offers a variety of instructions & tips using fat quarters & other "stash clutter". A sampling, a baby quilt, appliqué added quilt, a Japanese themed block, a holiday tale runner, nickel bricks, a 30's inspired design and many others that you will want to check out.

Enjoy! **Lettie**

# Block of the Month

To begin the celebration of our 2011 Quilt Show theme of the West, the block for this month is pots and plants of the West.

**April 2010**



Finished block 8-1/2"

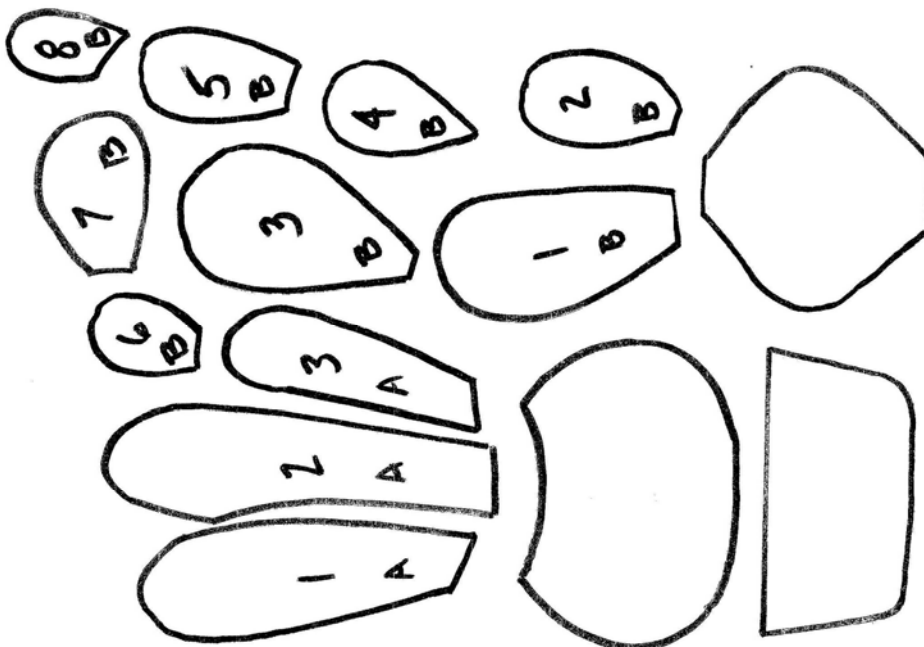
***These fun blocks are easy to make and you have your choice of any method of applique that you'd like.***

I found this wonderful fabric recently on a trip to Albuquerque and I just couldn't resist!

1. Cut background square 9 " from any fabric you choose.
2. Attached pattern pieces are actual size. just make a template of a sturdy material.
3. If you are using the fusible method finishing with raw edge stitching then you do not need to add any seam allowance to the piece.
4. If you are using the needle turn or freezer paper method add seam allowance to pattern piece.machine applique is fine.
5. For the flowers , I just fused "heat & bond" to my fabric and "fussy cut" the flowers and stems.
6. On the cactus I embroidered little blooming flowers with silk ribbon. This of course is optional.

Please contact Pat for the correct enlargement size for the pattern pieces below.

**Pat Rollie 323-224-8207**



# MEETING REPORTS

Glendale Quilt Guild  
Executive Board Meeting  
Mary Ann Kroening's Residence  
March 4, 2010

Attendees: Heidi St. Royal, Sharon Bishop, Mary Ann Kroening, Margie Emmons, Barbara Gibson, Caren Ryan, Brandi Nalley, Esther Norbut, Frances Brannon, and Susan Edwards

Heidi opened the meeting at 6:30pm thanking Mary Ann for hosting the meeting in her lovely home. The minutes of the last board meeting were reviewed and approved with the correction of Margie Emmons name. The treasurer's report was given and approved. Margie Emmons asked the board members for input and suggestions regarding next years budget needs.

Sharon Bishop reported that the next SCCQG meeting is on April 10<sup>th</sup>, but she is unable to attend. Since the topic is supposed to be philanthropy, she will check with Doralee. Sharon, also, reported that there are enough door prizes.

The current Newsletter looks terrific. It is complete, and lovely with a nice picture and article about the efforts of Gloria Molina in sending the mended shirts to Haiti with the LA firefighters. Gloria saved the guild a tremendous amount of time, effort and money.

Barbara Gibson presented the dilemma of Marcia Stein, September's speaker, who sent the contract back with a change about reimbursement for all expenses if workshop is cancelled. After discussion and consideration of the potential of the guild member's interest in her workshop, it was moved, seconded and approved to just have her for the lecture. Then, it was suggested that guild members would be interested in having Darlene Zimmerman speak. She will be at Camp Watch-a-Patcher in July and we may be able to work something out. Darlene specializes in 30's designs.

So far 7 people have signed up for Sylvia Pippen's workshop in April. However, more attendees are expected to participate. The goal would be to have enough people attend to cover the cost of the workshop and lecture.

Frances thanked Esther for organizing the welcoming committee, the "greeters", for guests and new members. The new members tea will be on May 2<sup>nd</sup> from 2 to 4 pm at Susan Edwards' residence.

2010 Show program was shown by Nan. Everyone agreed that it is beautiful with gorgeous color, large easy to read and detailed descriptions of every quilt! Registration for hotel room discounts has been extended to the start of the show. We are only about halfway to meet our goal. Caren arranged for a concession stand on Saturday evening for people who want to go directly from the show to the Saturday Night Sampler. The set up for the luncheon auction was discussed. At next week's meeting, Sharon will sell tickets for an opportunity to win a stay at the Marriott. Pre-sale Show tickets are being distributed to shops and

members.

Sharon asked permission to destroy 4 boxes of treasures records for the years 1996 to 2000. Everyone agreed that there is no need to keep 10 year old records.

Nancy announced that according to the by-laws, the honorary life member committee will pick the 2 frontrunners, distribute the ballot at the March meeting, and announce the winner at the April meeting. It was moved, seconded, and approved that the nominating committee for next year's slate of officers include Mary Beth Kile, Leah Bessey, Mary Ann Kroening, and Nancy Mraz. Volunteers for next year's officers are asked to step forward.

Because the library has already ordered new tables, we need a new philanthropy project. Please contact Doralee with ideas.

It was moved, seconded, discussed and approved to accept the officer's duties by-law changes that will be presented to the general membership for approval. Nan, then, handed out the last section of by-laws revision for the board members review.

Ability to charge items at the 2010 Show country store was discussed.

We are losing our space that we use to store our library books. Heidi and Sharon will meet with the library personnel to try to work something out.

The meeting was closed at 9:10 pm. The next meeting will be at Susan Edwards' house at 6:30 pm April 8th.

Respectfully submitted,  
Susan Edwards  
Recording secretary

## *Alice Turner's Vintage Dreams*





# MEETING REPORTS CONT'D.

## Glendale Quilt Guild General Meeting Glendale Central Library March 10, 2010

At 6:30pm Heidi St. Royal, wearing a St. Patrick's Day hat, welcomed everyone using her imitation of an Irish accent. She and Lorilei Snee led everyone in singing "When Irish Eyes are Smiling". After a heartfelt welcome to Terry Waldron, noted fiber artist, the minutes from February's meeting was approved as printed in the Newsletter.

Margie Emmons announced that credit cards may be used at the Show boutique. The treasure's report was presented and approved.

Parliamentarian, Nancy Mraz recommended a by-laws change to include all nominees on the Honorary Life Member ballot instead of only 2 names as it states now. Ballots for this year's nominees are available at the membership table, votes will be tabulated and announced at the next meeting. Next, Nancy asked for a voice vote for the 2010 officers nominating committee. It was moved, seconded and approved. Anyone willing to serve as Newsletter editor please come forward. Sandy Bradfield's 2 year term is up and she will orient the new editor as much as needed.

Upcoming programs and workshops were presented by Barbara Gibson and Mary Ann Kroening. Members are invited to dine with Sylvia Pippen April 15<sup>th</sup> at the Outback Steak House before the April 15<sup>th</sup> meeting. There is still space in her class on the 16<sup>th</sup>. Twelve members have signed up for the June workshop, The Big Bag, with Nan Maples.

2010 Show reports: Judy Sellers – some spaces for classes are still available; Caren Ryan – needs names of 2 more people who worked on the Fan quilt; Alice Smith – showed quilts she and Jean Giacomelli made for the auction luncheon and pleaded for more; Sharon Bishop announced the sale of tickets for 2 nights at the Marriott to be used before March 31<sup>st</sup>; Susan Edwards announced the names of opportunity ticket sale winners; Frances Brannon asked for boutique items; Nan Maples explained the Mystery Class eligibility.

Frances Brannon reported that tonight 139 members are in attendance with one guest. Door prizes were donated by the guild, Quilt N' Things and Ricky Tims. The booby prize returned and the winner was Pat Heydon.

Sue Williams encouraged everyone to participate in making quilts for Loving Hands.

There are 27 blocks tonight for the Block-of –the-month. The 3 winners are Lettie Williams, Alana Lee, and Dolly Anderson. Pat Rollie explained next month's block. Patterns are available.

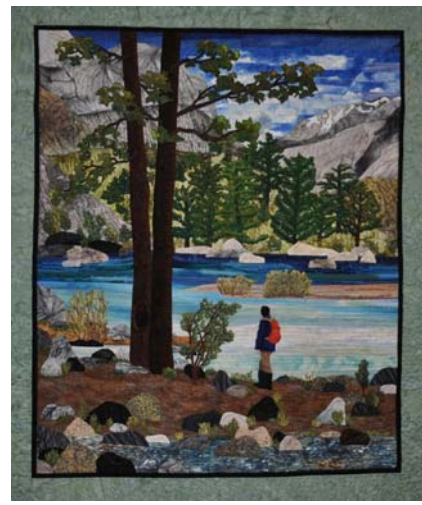
Heidi won the fat quarter draw. See Caren Ryan for pre-sale Show tickets for you and your friends at only \$8 tonight.

After the break , the hotel drawing was won by Marva Packey.

Tonight's speaker is Terry Waldron, art quilter, English teacher, art major. She talked about her journey "From Patchwork to Art" and showed her traditional quilts with an artistic flare.

The meeting was adjourned at 8:50 pm

Respectfully submitted,  
Susan Edwards  
Recording Secretary



*Lois Stelzer's  
Man With A Red Pack*

Watch for more pictures  
of winning quilts in the  
May issue of our GQG  
Newsletter.



## CALENDAR OF EVENTS/ MEMBER NEWS

**April 9-11, 2010**

Best of the Valley Quilt Show  
McDermont Field House, Lindsay, CA  
Info: [www.botvquilts.com](http://www.botvquilts.com)

**April 24-25, 2010**

Seven Sisters Quilt Show  
Alex Madonna Expo Ctr., San Luis Obispo, CA  
Info: [www.aqqcc.org](http://www.aqqcc.org)

**May 1-2, 2010**

Camarillo Quilter's Assn. Quilt Show  
Seaside Park, Ventura County Fairgrounds, CA  
Info: [www.camarilloquilters.org](http://www.camarilloquilters.org)

**May 1-2, 2010**

TLC Quilters Biennial Quilt Show  
Covina Women's Club, Covina, CA  
Info: [www.tlcquilters.org](http://www.tlcquilters.org)

**June 5-6, 2010**

FantaSea of Quilts Quilt Show  
SOKA University, Aliso Viejo, CA  
Info: [www.beachcitiesquilters.org](http://www.beachcitiesquilters.org)

**International Quilt Festival Long Beach**

is beginning to look for volunteers to work the show in July. If interested, contact: Terri Winsauer, Volunteer Asst. Coordinator at Email: [worktheshow@quilts.com](mailto:worktheshow@quilts.com) or on their website after May 20<sup>th</sup>:  
[www.quilts.com/worktheshows/LongBeach](http://www.quilts.com/worktheshows/LongBeach)

**The Fiber Program at SDSU is at risk of being eliminated after this Spring 2010 semester.**

Kathryn Harris is currently teaching the two classes titled Fiber Construction and Surface Design, one of the few remaining textiles programs being taught in Southern California. Please send letters, email or fax voicing your concerns about the loss of a Fiber program here in San Diego. Please pass this information on to others who may help. Thank you in advance for your support on behalf of Fiber Art students at San Diego State University, Sara Hayes

**Contact: President Stephen Weber**

San Diego State University, 5500 Campanile Dr., San Diego, CA 92182 Fax 619-594-8894  
[presidents.office@sdsu.edu](mailto:presidents.office@sdsu.edu)

or

**Dean Joyce Gattas** - Dean of PSFA (Professional Studies & Fine Arts) Fax 619-594-6974

[Joyce.Gattas@sdsu.edu](mailto:Joyce.Gattas@sdsu.edu)

**Did you know, . . .** during the 2001 Glendale Quilt Guild Show, an episode of Alex Anderson's TV show **"Simply Quilts"** was filmed on Sunday, the last day of the show? Were you there?

**Doralee Dohnel, Philanthropy**

[OFFICIAL NOTICE TO MEMBERS:](#)  
[Proposed Bylaws Revisions](#)

The final version of the proposed changes will be posted to the website by the **April** Membership Meeting. Please review them.

(MENU: Resources\Bylaws)

In the meantime, corrections are being posted to the same location on the website as they are pre-approved, section by section, by the Board.

Nan Maples [nanmaples@us.nestle.com](mailto:nanmaples@us.nestle.com)

**Announce special events in the newsletter.**

**Email info, dates & times to the Editor:**

**Sandy Bradfield [sandyb@usa.com](mailto:sandyb@usa.com)**

## EDITOR'S CORNER



Congratulations to  
all GQG members  
for a great show!

Once again GQG did it well! So many beautiful quilts & great classes! I find nothing more inspiring than looking at the wonderful display of work done by fellow quilters! My fingers itch to create a new quilt & I find myself bursting with new ideas. Now we can start working on Western quilts for the **2011 show!** Be sure to attend **Sylvia Pippen's** workshop on **April 17th**. Her work is awesome! I'll see you there.

As always, thanks for your articles, pictures & support as I send yet another issue to print.

Sandy

## AFFILIATE HAPPENINGS & MEMBER NEWS

■ **Featherweight for Sale** - excellent working condition. Contact Lettie Williams for more information at 818-241-5350.

■ **2<sup>nd</sup> Annual Midnight Quilters Retreat** – April 28 to May 3, 2010 in Cayucos, CA at the Cayucos Beach Inn. Info: 805-462-2188 or email: [sjohnson2456@sbcglobal.net](mailto:sjohnson2456@sbcglobal.net)



**Hop Around The Block  
Mini Shop Hop**

Join 7 Quilt Stores on  
Friday, April 9th 10am-7pm  
Saturday, April 10th 10am-5pm

Have your passport stamped at all 7 stores  
to be eligible for the following:

ONE LUCKY GRAND PRIZE WINNER  
will receive a prize of 21 yards of fabric  
(3 yards of his or her choice from each of the 7 stores)  
(1 yard minimums)

SEVEN LUCKY WINNERS will receive a gift certificate  
worth \$50.00 from one of the 7 stores.

Receive a BONUS 5 Patterns when you visit all seven stores.

**7 Shop Hop Stores:** Patchwork Penguin Tujunga,  
Quilt 'n' Things Montrose, New Moon Textiles Pasadena,  
Ginger's Quilt Shoppe Upland, Fabric Patch Montclair,  
The Tattered Rabbit Norco & Quilter's Cocoon Riverside.  
**Come join the fun!!!**

### Win \$500 Cash in the African Folklore Embroidery Challenge!

Entry forms and submission information are available online at [www.aflembroidery.com](http://www.aflembroidery.com). Entry form along with completed piece must be submitted no later than July 10, 2010. Entries will be on display at the **International Quilt Festival Long Beach, July 22-25th**. The Winner will be announced July 23rd. Questions contact: Leora Raikin 818-999-6094 [info@aflembroidery.com](mailto:info@aflembroidery.com)

**Thanksgiving Quilt Exchange:** Caren was inspired by Pearl Pereira's pattern "Dressed for Dinner", Pat Rollie's "Turkey BOM" and a few other seasonal blocks to make a Thanksgiving Exchange Project. If you're interested in making a Thanksgiving quilt this year, contact: Caren Ryan [moonoverthemountain@juno.com](mailto:moonoverthemountain@juno.com)

**Did you know...** family members may fight over your quilts? Don't forget to make out your Quilter's Will. You will find one at <http://quiltville.com/quilterswill.shtml>

**ATTENTION AFFILIATES:** We have space for you to make announcements, offer specials & keep the Guild informed about your business. Contact us & we will be happy to distribute our information to our

Print a copy of this newsletter in glorious **COLOR** by going to our website at [www.glendalequiltguild.org](http://www.glendalequiltguild.org) and clicking on the link named: **Current Newsletter!** Only black & white copies are available by mail.

### GENERAL GUILD INFORMATION VOLUME XXVI NO. 10 [www.GlendaleQuiltGuild.org](http://www.GlendaleQuiltGuild.org)

Glendale Quilt Guild, Inc. is a non-profit corporation. The purpose is to contribute to the knowledge of, and to promote the appreciation of, fine quilts, quiltmaking and collection; to gain knowledge of quilt techniques, patterns, history and quiltmakers through educational meetings, travel and friendship.

Meetings are held the 2<sup>nd</sup> Wednesday of every month at the

**Glendale Central Library Auditorium, 222 East Harvard Street, Glendale, California**

Social Time: 6:00 – 6:30 PM. Meeting begins at 6:30 PM. Guest fees: \$5.00 per meeting.

Membership dues are payable July 1 and are delinquent at the end of the August General Meeting.  
Active Members: \$30.00, Seniors (62+ years): \$25.00, Affiliates: \$35.00, Newsletter Only: \$30.00

The newsletter is a monthly publication of the Glendale Quilt Guild. Members are invited to submit items of interest for publication at the General Meeting or by E-mailing Sandy Bradfield at: [sandyb@usa.com](mailto:sandyb@usa.com).

**SUBMISSION DEADLINE IS THE MONDAY AFTER THE GENERAL MEETING.**



## AFFILIATES

### AFRICAN FOLKLORE EMBROIDERY

1928 Hill Drive  
Los Angeles, CA 90041  
Tel. 323.256.7985  
[www.afrembrodery.com](http://www.afrembrodery.com)

### NEW MOON TEXTILES

1393 E. Washington Blvd.  
Pasadena, CA 91104  
Tel: 626-296-6663  
[www.newmoontextiles.com](http://www.newmoontextiles.com)

### SEWING STUFF / SO MANY QUILT BOOKS

1336-A Railroad Street  
Paso Robles, CA 93446  
[www.sewmanyquiltbooks.com](http://www.sewmanyquiltbooks.com)  
(Shows & Internet only)

### BETTY'S PHOTOS ON FABRIC

P.O. Box 9307  
Rancho Cucamonga, CA 91707  
Tel. 909.987.3341  
[www.bettys-photos-on-fabric.com](http://www.bettys-photos-on-fabric.com)

### PATCHWORK PENGUIN

6245 Foothill Boulevard  
Tujunga, CA 91042  
Tel: 818-248-7390  
[www.patchworkpenguin.com](http://www.patchworkpenguin.com)

### THRIFT ALLEY

314-A East Harvard Street  
Glendale, CA 91205  
Tel: 818-246-2294  
[www.alglendale.org](http://www.alglendale.org)

### FRANK'S VACUUM & SEWING MACHINES

2145 Verdugo Boulevard  
Montrose, CA 91020  
Tel: 818-248-5411  
[www.franksvacuumsewing.com](http://www.franksvacuumsewing.com)

### QUILT 'N' THINGS

2411 Honolulu Avenue  
Montrose, CA 91020  
Tel: 818-957-2287  
[www.quiltnthings.com](http://www.quiltnthings.com)

### MAYHALL'S SEWING CENTER

2252 Honolulu Avenue  
Montrose, CA 91020  
Tel: 818-249-2466  
[www.mayhallssewingcenter.com](http://www.mayhallssewingcenter.com)

### THE QUILT EMPORIUM

4918 Topanga Canyon Blvd.  
Woodland Hills, CA 91364  
Tel: 818-704-8238  
[www.quiltemporium.com](http://www.quiltemporium.com)



**You are invited to join us at our next meeting:**

**MEETING: WEDNESDAY, APRIL 14, 6:30 PM**  
**GLENDALE CENTRAL LIBRARY • 222 E. HARVARD ST., GLENDALE**  
**REFRESHMENTS: SEE PAGE 3**

**or contact us for more information:**

**P.O. Box 5366 • Glendale, CA 91221-5366**

**[www.glendalequiltguild.org](http://www.glendalequiltguild.org)**