



Newsletter

MARCH 2008 VOLUME XXVII NO.9

WWW.GLENDALEQUILTGUILD.ORG

GENERAL MEETING:

WEDNESDAY, MARCH 12, 2008 • 7:00 PM



Alice & Heidi explain "stripping"

*It's Stripping Time!
Strip Poker is back!!!*

We will be playing
"Jelly Roll Strip Poker"
at our March Madness Meeting...

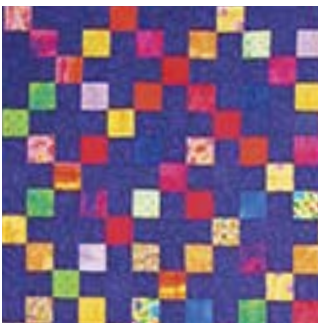


A sample Jelly Roll

It's an easy game: no money, no chips, just bring

30 pieces of 100% Cotton, 2 1/2" wide and 44" long

Your strips will serve as your chips...
(any combination of fabrics for a total of 30 pieces)



Using fabrics from your own stash
you can create fabulous and fast
quilt projects from your rolled strips
(examples shown here).



*Best thing is,
these "Jelly rolls" are non-fattening!*



Big winners will go home with enough to start a new quilt
and losers will have a good excuse
to visit a favorite quilt shop for their new quilting addiciton.

*So come on, let's rock 'n' roll & join in the fun
of a high stakes evening -*

odds are in your favor to have a great time!

President's Message



Presidential Tidbits

Isn't it nice to be in Southern California? Long time member Dorothea Corrigan called me from Kansas and she can't get out of her garage due to the rain turning into sleet and then black ice on the road! We may be getting a little occasional rain but our lowest temperature would be a good high for my son in Indiana and Dorothea in Kansas...

The Ides of March mean a return to the north for the snow birds and a return to our annual Quilt Show for us at the GQG. **THE SHOW IS OFFICIALLY HERE, March 28-30th!** (We moved Easter up to the week prior to the show so we would have more time.)

Your entry forms and pictures were due by March 1 for Quilts, Wearables and Dolls.... I hope we have lots of entries! Karen Millman also has 5 "challenges" with entry formsto be submitted by March 12. Make sure you have signed up for your workshops, the Fashion Show on Friday and Banquet on Saturday. In this issue of the newsletter are the phone numbers for persons that can answer your questions about various aspects of the show. It's all coming together thanks to our great vounteers!

Remember to bring your 2 ½" strips to the March 12 general guild meeting. Come early, stay late and bring a salad or finger food for our potluck during the strip poker game. It's a guaranteed "winner" in terms of having fun that evening...

Well, I have to get back to finishing my quilt for the show. So far I've done more re-sewing than actual quilting. It still needs binding... I'll be taking Robbi Joy Eklow's Saturday workshop at the show so I'll know how to do a fused binding for my *next* quilt!

See you at Strip Poker Night!

Alice Smith

April 2008 - No Workshop

Rest & Relaxation

Dessert & Salad Potluck

In April we will have put another fun quilt show behind us and all deserve some R & R! We will also have some guild activities, so mark your calenders for April 9 to celebrate the successes of the 2008 show and begin thinking ahead for the next year...

Also be thinking about nominations for new board positions - many of the current board members are in the second year of their 2-year term, so this will be your chance to take on a position you're interested in.

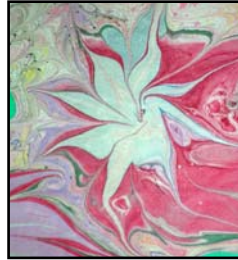


"Threads of Time" Opportunity Quilt

Meeting News

FUTURE PROGRAMS AND WORKSHOPS

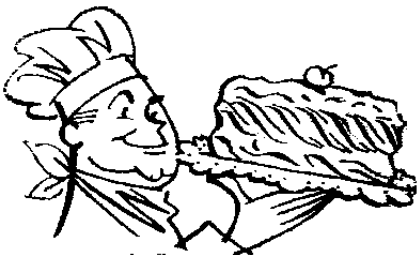
- March 12, 2008 Guild Event: *Jelly Roll Strip Poker*
No workshop.
- March 28, 29, 30 "Threads of Time" GQG Show
- April 9, 2008 Guild Event: *Rest & Relaxation*
Dessert and Salad Potluck
No Workshop.
- May 14, 2008 Joy Lily - Program:
Dyeing to Tell You
- May 15, 2008 Joy Lily - Workshop:
Marbling on Fabric
- June 11, 2008 Guild Event: *Officer Installation & Block Exchange*
- June 14, 2008 Guild Workshop: *Block of the Month assembly*
- July 9, 2008 Phyllis Binkley - Program:
Showing Depth & Space in Landscapes
- July 12, 2008 Phyllis Binkley - Workshop: *Painting with Fabrics*



To sign up for a workshop,
please contact Louise Rupp
at 323.667.3256 or louise_r@pacbell.net

Hospitality

If your last name begins with:



A thru E

*It is your turn
to bring refreshments.*

Since we're "gambling" at our March meeting, maybe we could find some game-themed decor to get people into a playful mood? And of course, some St.Patty's quilts for the Luck'O the Irish!



MEETINGS

BOARD MEETING
March 6th
6:30 pm

Glendale
Central Library
upstairs
Board Room

* * *

GENERAL MEETING
March 12th
7:00 pm

Glendale Library

* * *

LOVING HANDS
March 14th
10:00 am - 5:00 pm
1038 E. Elmwood
Burbank

* * *

2008 SHOW MEETING
March 18th
7:00 pm

Glendale Library
upstairs
Board Room

2008 Quilt Show



Threads of Time

The 2008 show is almost upon us and there is still plenty to do... .

If you have general show questions, please contact our quilt show chair, Michele Pusateri, and she will either have the answers or will direct you to the person who does. Some of those people are listed below, along with the areas they're handling for the show.

Also, please remember to sign up for your 2-hour show shift - this is the last month the boards will be available at a general meeting.

CONTACT LIST

Entry forms for the various items you might be displaying are in the program you received in the mail, as well as downloadable from the web-site: www.glendalequiltguild.org. All deadlines and spec's are listed as well.

❖ Michele Pusateri Quilt Show Chair	626.441.8212	Workshop & Events Registration
❖ Melinda Helscher	818.353.1405	Volunteer Coordinator
❖ Nan Maples	626.449.3132	Quilt Acquisitions
❖ Crystal Dudley	818.249.2859	Wearable Arts Acquisitions
❖ Lettie Williams	818.241.5350	Wearable Arts Acquisitions
❖ Betty Zarate	818 898-1194	Doll Entries
❖ Karen Millman	818.241.3288	Challenge Quilts / Projects

AWARDS BANQUET

Quilt Guild Awards Banquet - **Help Needed !**

There is a need for your help! Please call Caren and volunteer. We need:

- (40) mini quilts size: 12" across, 12-13" down, you decide the colors and pattern, call me and I can give you some ideas please let me know as soon as you finish one, I can pick it up, you can mail it to me, we can meet at a quilt shop, or make some other arrangements. **Deadline: ASAP**
- Volunteers to set up the banquet room at 4 pm on Saturday March 26th.
- Volunteers to get the quilts from the quilt exhibit to hang in the banquet hall.

Many thanks to the wonderful Glendale Quilt Guild members!

Caren Cooke Ryan 626.335.9351 moonoverthemountain@juno.com

COUNTRY STORE

Come join in the fun and participate in the guild's
Country Store at this year's show!

The fun is making or donating craft projects, quilts (finished or not) & wearables,
most anything sewing related is a winner!

More fun is receiving some extra cash for these items, always another's treasure!

15% of your designated price will automatically be given to the guild or if you desire you may donate entirely to the guild. Please, if you wish to participate, just copy & full out this page and tag items with your initials & price (tags to be provided), then list each item (list must accompany form).

Most important! Stick on price tags will not be accepted. You must use provided tags or similar tag with string or secure with tape if necessary. Also, please make arrangements for any large items with Heidi as they are to be delivered directly to hotel site.

REMINDER: this is a privilege *for guild members only* to sell items. Also, please see Heidi on final show day to pick up any remaining unsold merchandise. It would be so appreciated as everything must leave the premises... Any unclaimed merchandise will be brought to the April meeting to be reclaimed. Thereafter items will be placed for sale on the "Stuff Table" for the guild's benefit.

Name: _____
Address: _____
Phone: _____

Donate 15% ____ or 100% ____

Any questions, suggestions, etc., call:

Heidi St.Royal
818-841-3451

P.S. Deadline for acceptance of items is March guild meeting or by special arrangement.

Workshops

If you had fun attending Rob Appell's workshop last month at the Patchwork Penguin, and since the guild is not offering another one again until May, we're hoping you'll spend some of your workshop budget at the show...

We have so many great teachers and with 3 days of classes, surely you will find something that suits you. (Or try out a technique that's new!)

Hurray & register now... Threads of Time is fast approaching and you don't want the class you're considering to fill before you sign up!

The show is all about having fun - See you there!



LEFT: Crissa DuCharme, of the Patchwork Penguin, and Rob Appell, quilter.

BELOW: Some of Rob's quilts from his program.



Membership

NEW MEMBERS



Please welcome:

Claudia Jackson
Harriet Sartinsky
Judy Sellers
Paula Thomas
Kelly Tillman

Happy Birthday



Alice Turner	March 4		
Dona Garding	March 5		
Diane Renfrow	March 7	Dri Brown	March 18
Joan Homick	March 9	Mary Ann Kroening	March 22
Andre Giacomelli	March 11	Colleen Shier	March 23
Carolyn Hodapp	March 11	Beverly Underwood	March 23
Patricia Lopez	March 12	Cathy McNassor	March 24
Antonette Raycraft	March 12	Mary Ann Hildebrand	March 26
Juanita Wade	March 13	George Davis	March 28
Peggy Barber	March 17	Gloria Molina	March 3

NOMINATING COMMITTEE

It's that time of year again when we will be putting together a slate of names from which to elect new officers (in May) for the coming year.

This month, we will begin taking nominations and Pat Grim has put together a nominating committee whom you can speak to about the various positions that will need to be filled.

We hope to see new members as well as familiar faces stepping up to take on these positions, just like Frances Brannon, pictured here, who is already working with the current Membership Chairs.



Thanks Frances!

QUILTING ARTS TV SHOW

QUILTING ARTS TV HAS BEEN DEBUTING AROUND THE COUNTRY

Quilting Arts is where art and embellishment meet traditional quilting.

Guests of the show have included Katie Pasquini-Masopust, Judy Coates Perez, Jamie Fingal, Susan (Lucky) Shie, The Kemshalls, Sue Haussman, along with many others. Their first series included ideas and demonstrations on surface design, mixed media, embellishment and encrustations, landscape quilts, free motion quilting, needle felting, pictorial quilts, photo fabric, collages, home décor, writing on quilts, and the how-to's of various tools. They are currently working on their second series. The host and editor-in-chief of the show is Patricia (Pokey) Chatham Bolton. Pokey was first introduced to embellished quilting and related needle arts in 1998.



Pictured here (L to R):
Editor Pokey Chatham Bolton
and Judy Coates Perez
(former GQG Member)

Check your local PBS listing for the day times in your area. We have found it on KOCE (times vary). For additional info. check out these websites: <http://quiltingartstv.com/> and <http://www.quiltingartsblog.com/>

MARCH 2008

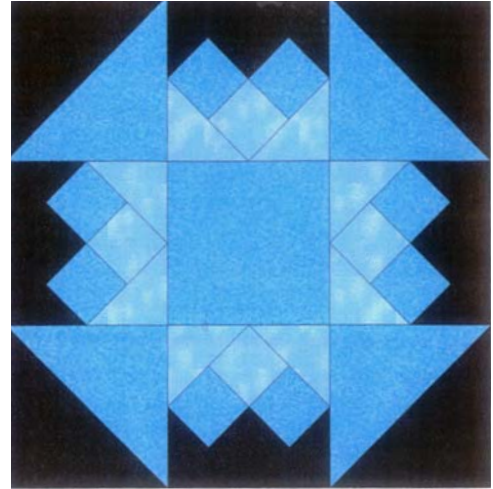
This month's block is called

AQUAMARINE

Color 1: Medium aqua

Color 2: Light aqua

Color 3: Kona black



Cut: Color 1, one 4-1/2" square; one 4-7/8 x 9-3/4 strip; one 2" x 16" strip

12 1/2" block

Color 2, one 2" x 4" strip; one 2-7/8" x 11-1/2" strip

Color 3, one 4-7/8" x 7-3/4" strip; one 2" x 4" strip; one 2-7/8" x 11-1/2" strip

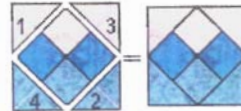
Cut colors 1 & 3: 4-7/8" x 9-3/4" into two each 4-7/8" squares.

Right sides together place color 1 and color 3 squares together.

On back of light square draw diagonal line and sew a scant 1/4"

on each side of line and cut between the two seams for

two half squares. Repeat for two more squares.



Cut color 1: 2" x 16" strip into eight 2" squares and

colors 2 and 3: 2" x 8" strips into four 2" squares each.

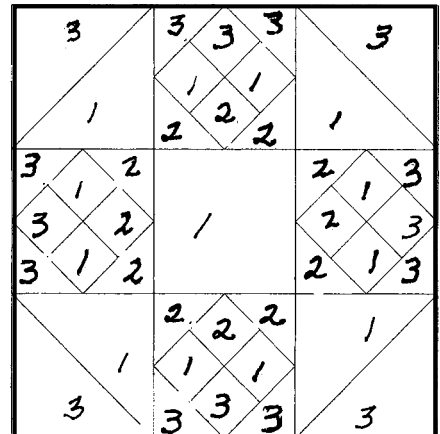
Create 4-patch as shown. Cut color 2 & 3: 2-7/8" x 11-1/2"

strips into four each 2-7/8" squares. Stack and cut on the

diagonal to make 8 half square triangles. Now crease the half triangle

in half and match center crease to seam lines and sew

onto four patch as shown. Assemble square as shown.



Meeting Reports



Glendale Quilt Guild Executive Board Meeting Location: Glendale Central Library Date: February 7, 2008

Present: Alice Smith; Nancy Mraz; Sandy Bradfield; Susan Edwards; Sabine Steinmetz; Pat Grim; Sue Vite; Katsy Chappell; Louise Rupp; Frances Brannon.

Meeting called to order at 6:40 PM.

Reports - There was an error in the minutes of January 2008 - Loving Hands always meets on the second Friday of the month. The next meeting will be on February 8th. With this change, the minutes were voted upon and passed.

Finance - Nancy Mraz presented the statement of accounts and budget results. She asked for an updated billing for the website costs. The finance report was voted upon and passed as written.

Newsletter - Sabine reminded everyone that April will be the last month for bulk mailing of the newsletter. Members who require a mail copy must be registered or it will not be sent. The complete newsletter is available on the website in color.

Correspondence - Susan Edwards reported a \$50 donation was made to Alley Cat Rescue in the name of Deborah Berlin and it was agreed that the book "Silk Ribbon Embroidery by Machine" would be added to the guild library. Another \$50 was donated to We Spark Cancer Group in the name of Bonnie Grassie. Susan also

announced that quilts were accepted to "Road to California" Quilt Show made by guild members Pat Rollie, Mary Ann Andrews & Madeline Bajracharya. It's a real honor to have your quilt accepted into a juried show. A get well card was sent to Ella Abrahamson, who is recovering from carpal tunnel surgery.

Parliamentarian - Pat Grim reminded the board we need an Election Nominating Committee by the next general meeting. We need new people to fill opening board positions this year.

Programs - Sue Vite reviewed the program schedule: February 13, Rob Appell will present Quilts From the Sea and Beyond; March 12 will be a guild event - Jelly Roll Strip Poker. April 9 is for Rest & Relaxation featuring a dessert & finger food potluck. The program will include Viewer's Choice Winners, Round Robin and a demonstration of Strip Quilts to use your 2 1/2" strips. The May speaker will be Joy Lilly, presenting Fabric Marbling.

Workshops - Louise Rupp said the next program will be Rob Appell & Quick Fuse Seascape Quilts on February 16 at Patchwork Penguin. There will be no workshops in March & April due to the guild show. Instead, we will host in-house functions - Jelly Roll Strip Poker in March and R&R with finger foods & dessert in April. Alice has already purchased large jelly rolls to use as prizes for five games during the second half of the meeting. For the April program, we need 4 or 5 volunteers to demonstrate quilt patterns using strips. There will also be a table with merchandise & leftovers from the country store.

It was also announced that a new quilting show, Quilting Arts, is being shown on KOCE.

Membership - Welcome to the board for new member Frances Brannon. She has converted the membership list to a full Excel file and asked that all updates be given to her for inclusion in her database.

2008 Quilt Show - March 1st is the deadline for quilt entries. There will be no extensions to this date. The quilt doesn't have to be finished, but pictures of the top and a close-up of a portion of the quilt are required in order to complete entry.

A proposal was made to distribute vouchers for last year's active member volunteers at the next general meeting. It was voted upon & passed.

The girl scouts will be available for white gloving & selling opportunity tickets at the show again this year.

Website - Board members were asked to test the links on the guild website & report any problems. This includes asking for registration forms.

Old Business - Alice asked if there was interest in arranging a group bus trip for the Long Beach Quilt Festival on July 25th. Katsy Chappell volunteered to get pricing for a bus or van.

There was no new business.

Meeting adjourned at 9:00 PM.

Respectfully Submitted by:

Sandy Bradfield,
Recording Secretary

Glendale Quilt Guild General Guild Meeting Location: Glendale Public Library Date: February 13, 2008

Meeting called to order at 7:15 PM.

The minutes from the January 2008 meeting had one correction regarding Loving Hands meeting time to confirm they will meet the second Friday of each month. Minutes were voted upon & confirmed as written.

Finance - Nancy Mraz presented the financial report. The membership voted and approved this report as written.

Reports (cont'd)

Correspondence - Susan Edwards reported on guild members who were asked to participate at Road to California. It is a great honor to display your work at a juried show. Congratulations to Pat Rollie, Mary Ann Andrews and Madeline Bajracharya. Get Well cards were sent to Ella Abrahamson & Linda Friedman and a Thinking of You card to Mary Beth Kile.

Parliamentarian - Pat Grim asked the membership for volunteers to serve on the nomination committee. A total of 7 members were voted to this committee & will be assisted by Pat Grim and Alice Smith representing the current guild board.

Programs - Alice Smith announced the speaker for the night: Rob Appell talking about his Quilts from the Sea and Beyond. There will be no speakers in March or April. Instead, the guild will hold in-house functions. March will be Strip Poker games with lots of fun & prizes. Members should bring 30 strips (2½" x WOF, minimum 40" long & 100% cotton) in order to participate. In April, we will have a Rest & Relaxation meeting with a pot-luck selection of desserts and finger foods. Round Robin demo's by guild members will show patterns for ways of using their 2½" strips won during March's strip poker night.

Workshops - Louise Rupp introduced Rob Appell as the speaker.

Newsletter - Sabine Steinmetz reminded members that in May the newsletter will only be mailed to those who have registered. The list is available tonight, so please sign up if you still want a mailed copy. The complete newsletter is now available in color on our guild website at www.glendalequiltguild.org. Sabine also reported that her 2 years of service will be ending and we need a new newsletter editor for the year beginning in June.

2008 Show Reports were given. Quilt registration - Nan Maples discussed the 4 forms available. Guild members can register quilts at no cost. Non-member registration for up to 3 quilts is \$10.00. She currently has 35 quilts registered &

60% are from non-members. The final deadline for quilt registration is March 1st and no quilts will be accepted after that date. Quilts don't have to be complete by March 1st, but we need a photo of the top and a detailed close-up picture by that date to complete registration. Digital prints are acceptable. No exceptions will be made. Mail entries to the address on the form with your address and phone number. Award categories are on the website and in the show brochure. Please call Nan if you have questions.

Crystal Dudley or Lettie Williams soon, so we can have an idea of how many items will be entered.

Merchandise - Cathy Euler has shirts, bags, pins & charms available tonight.

Challenges - Karen Millman discussed the challenges for Vests, Bags, Do Not Touch signs, Small Quilts and advised we have also added Postcards.

Country Store - Heidi St. Royal announced she will be accepting items from guild members at the hotel.

Wearable arts - Send your entries to

Continued on Page 10

EXECUTIVE BOARD 2007 - 2008

PRESIDENT	Alice Smith	626.796.2332
VICE-PRESIDENT	Heidi St. Royal	818.841.3451
WORKSHOP CHAIR	Louise Rupp	323.667.3256
PROGRAM CO-CHAIRS	Katsy Chappell	818.752.3732
	Sue Vite	818.249.4238
2008 QUILT SHOW CHAIR	Michele Pusateri	626.441.8212
2009 QUILT SHOW CHAIR	Rasa Read	323.257.7404
RECORDING SECRETARY	Sandy Bradfield	818.506.0673
CORRESPONDING SECRETARY	Susan Edwards	818.790.2214
TREASURER	Nancy Mraz	818.890.3337
PARLIAMENTARIAN	Pat Grim	818.243.9672
MEMBERSHIP CO-CHAIRS	Jean Giacomelli	626.281.6639
	Michele Pusateri	626.441.8212
NEWSLETTER	Sabine Steinmetz	818.955.5147

COMMITTEES 2007 -2008

LIBRARIAN	Sue Van deVyvere	818.845.5373
HOSPITALITY	Darlene Mezak	818.248.8102
	Peggy Schiffman	<i>to come</i>
EQUIPMENT/INVENTORY	Sharon Bishop	323.254.6045
PHILANTHROPY	Nancy Foote	818.567.0391
HISTORIAN	O P E N	
LOVING HANDS	Nancy Foote	818.567.0391
	Pat Grim	818.243.9672
BLOCK OF THE MONTH	Las Pulgas c/o	
	Gloria Flores	626.281.4306
SCCQG REPRESENTATIVE	Heidi St. Royal	818.841.3451
SHOW & SHARE	Marilyn Green	818.846.8862
GUILD 800# & E-MAIL	Kathy Flint	818.985.5594
PUBLICITY	Esther Norbut	818.249.4742
	Pat Atkins	323.221.6865
WELCOMING COMMITTEE	Loretta Bradley	323.661.9155
FRIENDSHIP GROUPS	O P E N	
TELEPHONE TREE	Anne Browne	818.790.3046
	Gail Powell	818.842.6450

GENERAL MEETING (cont'd.)

You will have the choice of receiving 15% of the sale with the balance going to the guild or you may donate 100% to the guild. Dora Lee will have tags for your items. Please make sure your initials & the price are on each tag. With your sales form, please indicate the last day price markdowns. See Heidi's flyer for more information.

Awards Banquet - Tickets are still available for the Banquet. Make sure to sign up for a fun evening. Donations of small quilts (12" x 12") are still needed for use as centerpieces. Please advise if they will be available for raffle gifts. We're also looking for donations for decorations since tablecloths will be black, white or crème in color.

Volunteers - Melinda Helscher kindly distributed vouchers for last year's active member volunteer duty. Sign-up sheets are available tonight for white gloving & other positions to work your 2 hour volunteer duty.

2009 Show - Rasa Read outlined the opportunity quilt plans. Guild members are asked to make a block at 3", 6", 9" or 12". Don't forget to add 1/2" to unfinished blocks. The design will require 30 - 9", 35 - 6", 35 - 3" and 9 - 12" blocks to complete the quilt. It will have white stars on a blue background. Rasa will begin collecting blocks next month. Anyone attending the Spikes class at the show can donate their class project to our opportunity quilt.

We need blocks by the end of April so we can start selling opportunity tickets.

Membership - Jean Giacomelli said there were 124 members in attendance, with 6 guests and 7 new members.

Door Prizes were awarded from a new shop - The Quilting Cocoon, The Cotton Ball (Rob Appell's shop), Patchwork Penguin, Quilt 'N Things & Candie's Quilt Works. The Booby Prize was won by Marianne Mathews.

Block of the Month - Next month's block is the Aquamarine. There were 24 blocks entered this month. Lettie Williams and Beverly Underwood each won 12 blocks.

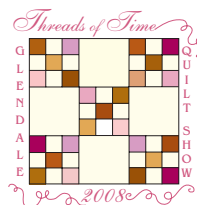
Show & Tell was followed by a snack break and the evening's speaker, Rob Appell, presented his program: "Quilts from the Sea and Beyond".

Meeting was adjourned at 9:30 PM.

Respectfully Submitted by:

Sandy Bradfield
Recording Secretar

*Are you
ready?*



ONE LAST LOOK

*Rob Appell's
"Traquinto"
fused
applique
wall-hanging*

*

*We look forward
to seeing
your creations
after taking
his workshop!*

CALENDAR OF EVENTS



March 28 - 30

Glendale Quilt Guild
presents "Threads of Time"
29th Annual Quilt Show
Fri. & Sat.: 10:00 am - 6:00 pm
Sunday: 10:00 am - 4:00 pm
Burbank Airport Marriott Hotel
& Convention Center
2500 Hollywood Way, Burbank
For more info. go to:
www.glendalequiltguild.org

April 26 & 27

Associated Quilt Guilds
of the Central Coast present
"Seven Sisters Quilt Show"
Alex Madonna Expo Center
at the Madonna Inn
100 Madonna Road, San Luis Obispo
Saturday: 9 am - 5 pm
Sunday: 9 am - 4 pm
\$7 for 1-day, or \$10 for a 2-day pass
For more info. visit: www.aqgcc.org
OR Write to: AQGCC
P.O. Box 16144
San Luis Obispo, CA 93406

May 17 & 18

Antelope Valley Quilt Assn's
31st Annual Show, "Spring Splendor"
Saturday: 10 am - 5pm
Sunday: 10 am - 4 pm
Quilt Auction - Sat. at 1 pm.
Antelope Valley Fairgrounds
Eliopulos Pavilion
2551 W. Avenue H, Lancaster
Admission \$7.00,
husbands and children free.
For more info. visit: www.avqa.org
or Call: 661-947-7604, 661-917-8746
E-mail Contact:
jharrington66@earthlink.net



A Note from the Editor



It is that time of year when we need to elect a new Board, and in several cases fill positions which will be vacated by persons who have already served 2 years in one position. Being active with the Guild in a board capacity is a unique opportunity to put your stamp on things and participate in a way that is suited to your particular talents... Everyone is welcome to step up to the challenge and see how the Guild operates from another perspective.

One of the positions that will be opening is the Newsletter Editor. Other than some regular features which need to be included, you can be as creative as you like with the newsletter and change the entire look if you like. Any basic computer lay-out program should allow you to plug in pre-established graphics and import pictures - the rest being a matter of personal preference re: fonts, colors, artwork, etc.

If anyone is interested, please see me. I have put together a CD with general guidelines and basic information that may help streamline the process for you and give you a general idea for formatting. I will have several copies available at the next General Meeting if anyone would like to familiarize themselves with the position.

- Ed.

2009 "GALAXY" OPPORTUNITY QUILT

GUIDE FOR MAKING STAR BLOCKS

Two main colors should dominate: a white star on a dark blue background. While flipping through Nick's magazine "Sky and Telescope", a beautiful array of photos caught my eye. As he explained, I jotted down some colorful ideas. For a variety of lights and medium lights, don't hesitate to introduce some hints of warm yellow (like our Sun) or orange (think Mars), or cold violet (like Sirius) or even a small sliver of red (like a carbon star). For hidden interest, make a brown dwarf, and if it fades into the darkness, that's O.K., because they are not visible to the naked eye. You may want to mix a trace of deep garnet into the background to represent gas jettisoning from young energetic stars. If you add green with hints of teal that would mean there is oxygen glowing in the remnants of a nova.

Now that the imagination is tickled, let's tackle some technical details. The block should be a square of any of the following sizes:

- 12½ inches square unfinished (12 inches finished); only 8 blocks are needed
- 9½ inches square unfinished (9 inches finished); 30 blocks needed
- 6½ inches square unfinished (6 inches finished); 35 blocks needed
- 3½ inches square unfinished (3 inches finished); 35 blocks needed

Or, for the adventurous, a rectangular block of the following sizes may be an option:

- 12½ inches by 9½ inches unfinished (12 by 9 inches finished)
- 12½ inches by 6½ inches unfinished (12 by 6 inches finished)
- 9½ inches by 6½ inches unfinished (9 by 6 inches finished)
- 9½ inches by 3½ inches unfinished (9 by 3 inches finished)

Any traditional pieced star block (Variable, Sawtooth, Lemoyne, Ohio, etc.) or variation of those is perfect. Any really spiky paper pieced star would shine in the Galaxy too. Karen Stone & Barbara Barber are good designers to look up for ideas and paper pieced patterns. Any unique "star" design of your own would be a welcome addition! Bigger sized blocks should have more elements within the block. For example, a 12½" feathered star a la Marsha McCloskey is a great choice, while a friendship star is better as a 3½" block. A lot of Marsha's patterns finish at 8½", but if you make one, I will add background strips so it measures 9½" and it will work great.

Many of you have remarked how flat my blocks lie. Here are my tips for better results:

- Keep a consistent ¼" seam (I use a stack of masking tape on the machine to mark it).
- Press the seams OPEN. Fear not the quilt police, I've been doing this for years, and I am still roaming free. Please humor me... you might like the result!
- When making half square triangles, make slightly oversized, and trim to a perfect measurement before joining into a block
- If you HAVE to use appliqué, be sparing with the glue, and no raw edges please. The intent for the Galaxy is to be a bed quilt, used and washed, loved and durable.

If you need a pattern, call or e-mail me, I have some to choose from. And get sewing soon!

Rasa Read - Quilt Show Chair 2009

GENERAL GUILD INFORMATION

VOLUME XXVII No. 9

www.GlendaleQuiltGuild.org

Glendale Quilt Guild, Inc. is a non-profit corporation. The purpose is to contribute to the knowledge of, and to promote the appreciation of, fine quilts, quilting and collecting; to gain knowledge of quilt techniques, patterns, history and quiltmakers through educational meetings, travel and friendship.

Meetings are held the 2nd Wednesday of every month at the

Glendale Central Library Auditorium, 222 East Harvard Street, Glendale, California.

Social time: 6:30 - 7:00 pm. Meeting begins at 7:00 pm. Guest fees: \$5. per meeting.

Membership dues are payable July 1 and are delinquent at the end of the August General Meeting.

Active Members: \$20., Seniors (62+ years): \$15., Affiliates: \$25., Newsletter Only: \$20.

The newsletter is a monthly publication of the Glendale Quilt Guild. Members are invited to submit items of interest for publication at the General Meeting or by E-mailing Sabine Steinmetz at: gardensbysabine@aol.com.

SUBMISSION DEADLINE IS THE MONDAY AFTER THE GENERAL MEETING.



AFFILIATES

A QUILTER'S DREAM

150 N. San Gabriel Blvd. Ste.500
Pasadena, CA 91107
Tel: 626-744-2779
www.aquiltersdream.com

AZABU-YA/ MK CONCEPTS

3019 Pico Blvd., Suite 5
Santa Monica, CA 90405
Tel: 310-828-8046
www.azabu ya.com

BETTY'S PHOTOS ON FABRIC

P.O. Box 1336
Alta Loma, CA 91701
Tel: 909-987-3341

THE CALICO HOUSE

1279 E. Imperial Highway
Placentia, CA 92870
Tel: 714 993-3091

CANDY'S QUILTWORKS

8917 Reseda Blvd.
Northridge, CA 91324
Tel: 818-349-SEWS (7397)

COZY COTTAGE FABRICS

740 N. Brea Blvd
Brea, CA 92821
Tel: 714-529-2999

EMMALINE'S

1203 N. Catalina Street
Burbank, CA 91505-2326
Deb91505@yahoo.com

FRANK'S VACUUM & SEWING ACHINES

2145 Verdugo Road
Montrose, CA 91020
818-248-5411
www.fransvacuumsewing.com

LEAH'S FABRIC GALLERY

1321 E Katella Ave
Orange, CA 92867
Tel: 714-639-1555
or
28641 Marguerite Pkwy, #3
Mission Viejo, CA 92692
Tel: 949-364-6372

NEW MOON TEXTILES

newmoontextiles.com
626-296-6663

PATCHWORK PENGUIN

6477 Foothill Boulevard
Tujunga, CA 91042
Tel: 818-352-7300
Fax: 818-352-3544
thequiltingnut@patchworkpenguin.com
www.patchworkpenguin.com

POLLARD'S SEW CREATIVE

780 S Arroyo Pkwy
Pasadena, CA 91105
(626) 795-9907
A N D
71934 E. Route 66
Glendora, CA 91740
626-335-2770
www.pollardsewcreative.com

QUILT 'N' THINGS

2411 Honolulu Ave
Montrose, CA 91020
Tel: 818-957-2287

THE QUILT ATTIC

106 Bridge Street
Arroyo Grande, CA 93420
Tel: 805-474-0717

THE QUILT EMPORIUM

4918 Topanga Canyon Blvd.
Woodland Hills, CA 91364
Tel: 818-704 8238

THE QUILTED ROSE

7151 El Cajon Blvd. Suite 0
San Diego, Ca 92115
Tel: 619-462-1848
www.thequiltedrose.com

SANTA BARBARA QUILTING RETREATS

311-A East Victoria Street
Santa Barbara, CA 93101
Tel: 805-899-3947
www.santabarbaraquilting.com

SEWING STUFF / SO MANY BOOKS

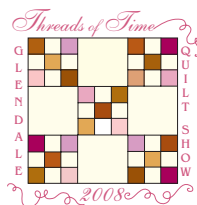
1336-A Railroad Street
Paso Robles, CA 93446
Tel: 805-238-2977



MEETING: WEDNESDAY, MARCH 12, 2008 @ 7:00 PM
GLENDALE CENTRAL LIBRARY 222 E. HARVARD BLVD., GLENDALE
REFRESHMENTS: A - E

For complete 2008 Show information, please visit:

www.glendalequiltguild.org



or contact us at:

P.O. Box 5366 • Glendale, CA • 91221-5366