



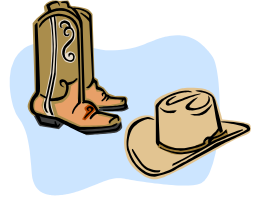
Newsletter

Volume XXVIII No. 2

www.glendalequiltguild.org

GENERAL MEETING

WEDNESDAY, AUGUST 13, 2008 7:00 PM



Heidi's Red Hot Summer Round-up

Howdy!

Come and enjoy the fun, partner. We are going to have a rip-roarin', rootin'-tootin' good time!

This month, we are featuring the slides from the Association of Pacific Northwest Quilters program:

"The Elements: Earth, Wind, Fire, and Chocolate"

Fifty-Three quilt makers were invited to create quilts which reflected the whimsical theme; paying homage to the oft-held opinion of quilters that chocolate is indeed a basic element. Artistic expression and construction techniques of unlimited variety were encouraged. The quilts traveled for two years and were then auctioned off at the APNQ's Gala Dinner and Auction, hosted during their biennial Quiltfest Show. Come and enjoy the slides of these amazing quilts narrated by yours truly, Barbara Gibson.

EXTRA! EXTRA!

Extra door prize tickets for:

1. Dressing in our western theme (Put on your cowboy hat, tug on your boots, or find a bandana).
2. Bringing a pie.
3. Bringing Brownies or other Chocolate dessert.



Ice Cream will be provided by the Guild.

Rustle up your western theme items for show and tell. We are excited to see what our members have done with all the wonderful and fanciful western prints available. Or, bring a fat quarter with a western motif and join in our fat quarter exchange.



**Come enjoy the quilts.
Come enjoy the chocolate.
It is going to be an inspiring evening!**



The President's Block



♪ **Mama Mia! Here I go again!** **Wasn't July fun!!** ♪

We all enjoyed a spectacular "Landscape" program by Phyllis Binkley, and thank you to Barbara Gibson, program chair and assistant Kim Smith in welcoming our guest speaker with GQG class! What pros!!

Yippee-Kai-ay! Be ready to don your western duds to a dynamo "Hot August Night" at our next meeting with lots of activities and fun with cowgirls Barbara and Kim.

♪ *Oh yes! Mama Mia!* ♪
My, my, how can you resist it?

What a bus trip to Long Beach Quilt International, orchestrated by our dear Alice Smith! She filled the bus with a real party group decked out with new quilt attire, our Tye dyed "Super Cosmic Connections" tee shirts. And were we connecting!! Rasa Read, our 2009 quilt show chairperson, gave us a pep talk prior to our adventure, and armed us with show flyers and opportunity tickets. We were all true ambassadors of the guild and did our duty. Our new shirts were a hit and we graciously accepted compliments throughout the weekend.

It was a super show with fun memories (trying on shirts at my SUV shop and dressing room under the 210 freeway!). We had fun and games on the bus to discover special exhibits besides the vendors!

On returning, this lively group boarding the bus was so proud of their accomplishments in shopping, a prize of \$15 was awarded to the biggest spender, Paula Thomas, our treasurer. She was the black belt shopping queen of spending the most \$\$\$!

Hopefully, the prize could get her a few gallons of gas to get home!

Oh! Lest we not forget the "Dancing Queens" Linda Rasmussen, Caren Ryan, Pat Grim, and yours truly, adorned seductively with lavender boas, courtesy of Eleanor Burns' Quilt in a Day booth. We tried our best to work the crowd dancing down the bus aisles on the way back home. We were generously tipped but we kindly refused as we only perform for premium fat quarters, Olfas, Berninas, etc.

Again, it was a super outing, and we must do an encore again soon! The word is out; Susan Fredericks (our bus chairperson) has something in the works.

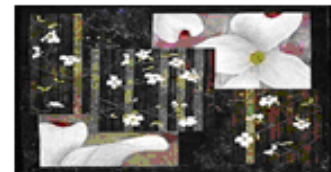
SOS

A wannabe "Dancing Queen"

Heidi

P.S. As if you couldn't tell, I loved the movie musical "Mamma Mia".

What a fun flick! It's a must see!



September 2008 General Meeting

Join us for an evening with

Andrea Perejda

An award-winning quiltmaker, teacher and NQA Certified Quilt Judge, Andi began quilting in 1991 and her interest and enthusiasm in all facets of quilt making continues to grow. She is well known for her hand quilting and hand appliqué. Andi will present us with a Trunk Show of her wonderful quilts.

**Tell your friends and mark your calendars.
This is a night you can't miss!**

Future Programs & Workshops



SEPTEMBER 10, 2008	ANDREA PEREJDA - TRUNK SHOW
SEPTEMBER 11, 2008	ANDREA PEREJDA - WORKSHOP: "BASIC HAND QUILTING"
OCTOBER 8, 2008	SHARON PEDERSEN - TRUNK SHOW
OCTOBER 11, 2008	SHARON PEDERSEN - WORKSHOP: "Machine Sashiko"
NOVEMBER 12, 2008	GUILD EVENT (T.B.D.)
DECEMBER 10, 2008	ANNUAL GUILD HOLIDAY PARTY "POT LUCK & ENTERTAINMENT"

To sign up for a workshop,
Please contact Ann Calloway
at 626-298-6659 or craigeann@yahoo.com



MEETINGS

BOARD MEETING

August 7, 2008

6:30 PM

Glendale Library

* * *

GENERAL MEETING

August 13, 2008

7:00 PM

Glendale Library

* * *

LOVING HANDS

** No Meeting **

In August

* * *

2009 QUILT SHOW MEETING

August 19, 2008

7:00 PM

Glendale Library

Hospitality



If your last name begins with the letters

A thru *E*,

it is your turn to bring refreshments.



This month we feature pie and
brownies, with ice cream provided by the Guild.

See you all there!



Attention GQG Members:

~ ~ ~

There are still a few chair & co-chair positions available on the 2009 Show Committee. Check out the list below & join us for the next meeting on August 19th.

Share with a friend as Co-Chairs.
Be part of the Fun & help plan the show.

Available Show Committee Positions:

Job Name	Description
Acquisitions/Quilts /Quilt Exhibitor packets /Staging Room	Works in Tandem with Judging and Awards, chaired by Nan Maples. Maybe be split into two positions. The responsibilities include: 1. Making the Quilt Labels Can be done far in advance. Required for the Quilt Packets. 2. Assembling the Quilt Packets All packet materials will be provided by Judging and Awards. 3. Quilt Intake-Supervise Packet and forms will be provided Judging and Awards. Receive quilt; process paperwork; Pin Judging card on quilt; Fold it properly; Deliver to Judging Room/or Photography. 4. Quilt Return-Supervise
Banquet	Works with awards chair and show chair to schedule a program. Works with show chair and Marriott to select menu and linens. Selects table decorations, works with workshops chair to select a speaker. Works with vendor chair on door prizes. Works with workshops registrations to ensure payment and counts.
Children's activities	Special attention needed this year. Children's classes will be conducted at the Show. More promotion needs to be done to attract parents with kids. At the same time, more interesting activities need to take place.
Fashion Show	Not happening since Designing Ladies disbanded.
Guest opportunity quilts	
Guild booth/ information	
Opportunity quilt promotion	Needed RIGHT NOW.
Program (quilt descriptions)	Works with Judging and Awards and Vendor chairs for input information. Designs the layout of the program, coordinates with the printer (Sabine). Most work occurs past January.
Secretary	
Security	
Signs	
Sponsors	
Admission Tickets/Advanced ticket sales	

From your Library ~

Crystal's choice: A new addition to the library purchased and signed by the author at the IQF in Long Beach. *Quilt in a Day Victory Quilts of the 1940's Sampler Quilts* by Eleanor Burns. This book has a traditional quilting focus plus nostalgia. Some stories relating to the depression days including Franklin Delano Roosevelt's war time presidency and his Scottie dog Fala., a rationing inspired sugarless cookie recipe, and other stories of that era. A very interesting book.

Lettie's choice: *90 Minute Quilts 2006* by Meryl Ann Butler. This is a book for creating some easy and fast-finishing type quilts. Plus some tips for construction I thought were helpful. The author claims these are an afternoon's work. Well, I am not sure of that, but it does sound good.

EXECUTIVE BOARD 2008 - 2009

PRESIDENT	Heidi St. Royal	818.841.3451
VICE-PRESIDENT	Sharon Bishop	323.254.6045
PROGRAMS	Barbara Gibson Asst. Kimberly Smith	818.768.3052 818.352.1136
WORKSHOPS	Ann Craig-Calloway Asst. Donna Hovartos	626.710.2689 818.572.3958
2009 QUILT SHOW CHAIR	Rasa Read	323.257.7904
2010 QUILT SHOW CHAIR	Caren Ryan	626.335.7857
RECORDING SECRETARY	Susan Edwards	818.790.2214
CORRESPONDING SECRETARY	Mia Bloom	818.359.0262
TREASURER	Paula Thomas	818.899.2811
MEMBERSHIP	Frances Brannon Asst. Dovie Kapoh	818.241.6507 323.225.1891
NEWSLETTER	Sandy Bradfield	818.506.0673
PARLIAMENTARIAN	Nancy Mraz Pat Grim	818.890.3337 818.343.9672
ADVISOR	Alice Smith	626.796.2332

STANDING COMMITTEES 2008 – 2009

EQUIPMENT/INVENTORY	Sharon Bishop	323.254.6045
LIBRARIANS	Crystal Dudley Lettie Williams	818.249.2859 818.241.5350
PHILANTHROPY	Doralee Dohnel	661.252.6619
HOSPITALITY	Darlene Mezak Peggy Schiffman	818.248.8102 626.799.1503
HISTORIAN	Carol Jacobsen	626.794.3006
PUBLICITY	Pat Atkins Esther Norbut	323.221.6865 818.249.4742

SPECIAL COMMITTEES 2008 – 2009

BLOCK OF THE MONTH	Leah Bessey Carol Jacobsen	323.662.7252 626.794.3006
LOVING HANDS	Nancy Foote Pat Grim	818.567.0391 818.243.9672
TELEPHONE TREE	Anne Browne Gail Powell	818.790.3046 818.842.6450
TRIPS	Susan Fredericks	818.547.9601
WELCOMING	Loretta Bradley	323.661.9155
WEB SITE LIASON, E-MAIL	Melinda Helscher	818.353.1405
SHOW & TELL	Birgit Siegel	818.506.6520
S.C.C.Q.G. REPRESENTATIVE	Sharon Bishop	323.254.6045
ROVING REPORTER	Sabine Steinmetz	818.955.5147

~ Membership ~

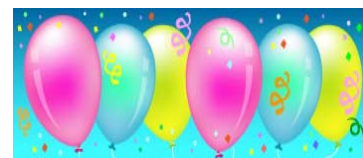
New Members

Please welcome:

Margie Emmons

Brandi Nalley

Lella Smith



Happy Birthday!

August 2008

Patty Bernal	1	Dovie Kapoh	16
Olivia Headley	2	Diana Barnes	17
Pat Grim	4	Claudia Jackson	18
Marianne Mathews	4	Pat Rollie	18
Joy DiCarlo	5	Lana Marie Wittman	22
Ann Hunter	5	Ruth McWilliams	24
Camellia Clouse	9	Lucy Agajanian	26
Patricia Heydon	9	Doralee Dohnel	28
Denise Levenick	11	Karen Griggs	28
Barbara Fedors	12	Randi Burke-Aguiar	29
Barbara Weitekamp	12	Lita Murray	29
Paula Thomas	13	Birgit Siegel	29
Charlotte Rose	14	Helen Xydias	29
Julie Christoni	15	Tina Hirose	30
Marylou Walker	15	Irene Horn	31
		Christine Olliff	31
		Flo Garcia	

ANNUAL MEMBERSHIP

Have you renewed?

**Don't miss out
on all the fun!**

**See Frances Brannon
for membership forms
NOW!**

Loving Hands

Loving Hands meets on the 2nd Friday of the month at:
1038 E. Elmwood, Burbank

**Sorry,
there will be no meeting in August!**



In Memoriam ~

*A former member of the Guild has passed. ~ **Marion Olson***

A memorial service was held at the Little Church of the Flowers at Forest Lawn on June 30, 2008. Marion joined the Glendale Guild years ago and was an active participant at meetings and quilt shows throughout her membership. She loved quilts and quilters.

Marion will be missed by all.

Block of the Month

Galaxy of Stars

Block of the Month

Glendale Quilt Guild

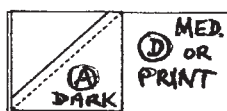
August 2008

Block will be 8 inches finished (8 1/2 inches with seam allowances)

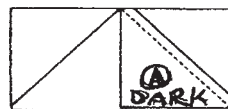
You will need: 12 squares 2 1/2" X 2 1/2" (A) Dark Blue Background
 8 squares 2 1/2" X 2 1/2" (B) Light Blue/White Points
 1 square 4" X 4" (C) Med. Blue/Print Center
 4 rectngls 2 1/2" X 4 1/2" (D) Med. Blue/Print Geese Base

Technique Used: **Double Geese**

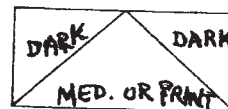
Place one of the rectangles face up. Sew a dark square face down on one end of the rectangle on a diagonal line from one corner of the dark square to the opposite. Trim. Flip the fabric back.



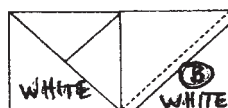
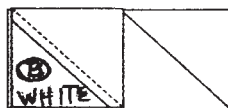
Repeat on the other side of the rectangle with another dark square making a Flying Geese unit. Trim. Flip fabric back.



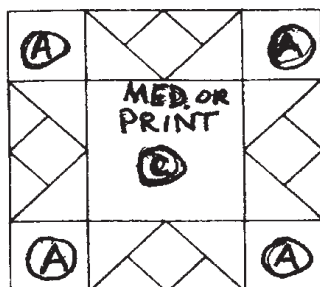
Sew one of the light squares face down onto one end of the rectangle in a diagonal line going the other direction. Trim and flip fabric back. Sew a second light square to the other end. Trim. Flip.



Repeat to make 4 Double Geese.



Sew the 9 pieces of the block together.



See page 11

for a picture of last year's BOM prize quilt won at the June meeting!

Make up to 5 blocks

to enter your name in the monthly drawing

(1 entry per block - up to 5 chances!)

(Make an "extra" for yourself so you'll have a collection at the end of the year!)

MEETING REPORTS

**Glendale Quilt Guild
July 2008 Executive Board Meeting
Location: Susan Edward's Home
Date: June 26, 2008**

Attendees: Alice Smith, Heidi St.Royal, Sharon Bishop, Nancy Mraz, Paula Thomas, Sandy Bradfield, Mia Bloom, Pat Grim, Frances Brannon, Sue Vite, Barbara Gibson, Kim Smith, Louise Rupp, Donna Hovartos, Rasa Read, Caren Ryan, Crystal Dudley, Lettie Williams, Peggy Schiffman, Pat Atkins, Carol Jacobsen, Susan Edwards

Alice Smith called the meeting to order at 7:45 PM.

The minutes from the last meeting have not been published yet because the Newsletter is sent at the end of the month.

Nancy Mraz and Alice Smith with the help of others explained our present financial situation and necessity of a 2 year operational reserve.

Newsletter: Sandy Bradfield showed her mock up of the Newsletter. The deadline for articles will be 7, or at the latest, 10 days after the General meeting. Sandy requests that people submit articles via email using Word. Ideas for articles included highlighting a board member or hero-of-the-month so that members could get to know those active in the guild.

Correspondence: Susan Edwards sent a get well card to Susan De Vyvere. She owes a card to Bari Phillips.

Parliamentarian: Pat Grim asked that she be informed of who passed on procedure notebooks and who needed notebooks. Pat will make notebooks for those who need one. Notebooks contain the bylaws which outline each positions duties, how to accomplish these duties, and past members personal hints.

Programs: Sue Vite who organized programs from 2006 through some of 2009 suggested that contracts be updated to include a cancellation clause and tax id number.

Workshops: Phyllis Binkley understands that her workshop for July has been cancelled due to lack of attendees. Andrea Perejda is teaching hand quilting in September. She was praised for her quilting skills and versatility by many board members present. Sharon Pedersen is teaching her reversible quilt technique for a table runner in October. There was a brief discussion about which day of the week workshops should be held in terms of member attendance, cost, and teacher requests.

Membership: Frances Brannon announced that after the July meeting, renewals will be mailed and members will have to pay for a stamp when returning the form. She has made an Excel spreadsheet data base of the roster that she will share with those who have a need, such as the Show chairs.

Show 2009: Rasa Read presented the 92" x 104" opportunity quilt top. The overwhelming response by those present was: "wow", "awesome", "impressive", "stunning", etc. Rasa asked for volunteers for the most pressing jobs. Nancy Mraz volunteered to check on the raffle permit. Heidi St. Royal will research printing tickets for the opportunity quilt. Alice stated that Joan Hutter would deliver flyers advertising our Show to quilt shops when she attends the Quilter's Run this month. Sharon Bishop and Caren Ryan volunteered to compare the viewer's choice ballots with the show mailing list to prevent duplicates. A committee was formed to meet with the Marriott to discuss the contract: Pat Grim, Heidi St.Royal, Caren Ryan, Rasa Read and

Sandy Bradfield. Rasa has at least 10 more positions to fill. Volunteers are also needed for the Long Beach Quilt Show to sell tickets and white glove special exhibits. She suggested that everyone going to Long Beach wear a tee shirt to advertise our Show. Tie-dye in a blue spiral color was chosen to coordinate with our theme. The Board members agreed to purchase a few for sale so members going on the bus trip and those working at the show could purchase them. A price of \$15 was suggested. The first meeting of the 2009 Show committee will be Tuesday, July 15th, 7 PM at the Central Library Board Room.

Equipment/Inventory: Sharon Bishop has a complete inventory list.

Hospitality: Peggy Schiffman and Darlene Mezak will continue in this position. An alpha assignment will continue to be published in the Newsletter for refreshment duty for each General Meeting.

Publicity: Pat Atkins has been invited to board and show meetings. All committee members and past board members are also invited to attend board meetings.

Library: Lettie Williams and Crystal Dudley, our new librarians, will enforce the late fees in hopes of using the funds to purchase new books. The board agreed that books lost in previous years and last years attempts to retrieve them have failed, so it is time to move on.

Block-of-the-Month: Because of the July transition of new board and committee members there is no block-of-the-month in July. Carol Jacobson with the help of Leah Bessey will head this committee for next year. She suggested a theme of stars in a blue background in different sizes, using different techniques each month. This coordinates with the 2009 Show theme. The board agreed.

Old Business: The vice-president is the representative to the Southern California Council of Quilt Guilds. The next meeting, Saturday, July 19th in Fallbrook, is Meet-the-Teachers. Program chairs, Barbara Gibson and Kim Smith were asked to attend by Sharon Bishop. And Paula Thomas volunteered to attend.

New Business: Heidi St.Royal, our incoming president, introduced and welcomed each old and new officer. She commented on the necessity of insight from people who have been on the board and held various positions over the years, as well as the need for new people. A good mix is invaluable for effective functioning. Heidi then led a discussion about the August meeting. Possible activities are ice cream social, pop corn machine, western theme, slide show, diet concerns, and the many requests for another strip poker night.

Notebook Exchange: Outgoing board members gave their notebooks and explained duties to each new board member.

The next Board meeting will be August 7th, at the Central Library, 2nd floor board room.
The meeting was adjourned at 9:30PM.

Respectfully submitted,
Susan Edwards
Recording Secretary

MEETING REPORTS CONT'D.

Glendale Quilt Guild General Meeting Glendale Central Library July 9 , 2008

President Heidi St. Royal called the meeting to order at 7 PM and introduced our guest speaker Phyllis Binkley. To acquaint the membership, Heidi gave a brief and entertaining auto-biography, followed by an introduction of each board and committee member. She instructed them to enjoy participating this year & be comfortable; presenting each with flip-flops and a fat quarter.

Hearing no corrections, the minutes of the last general meeting, 6/11/08, were approved as printed in the newsletter.

The treasury report as printed in the July, 2008 Newsletter will go to audit & the year end report will be available at the next meeting.

Corresponding secretary, Mia Bloom sent get well notes to Sue Williams and Bari Phillips.

The bus trip to Long Beach Quilt Show has sold 55 tickets and there are 3 people on the waiting list. Alice Smith gave directions to the meeting place which is the park and ride under the 134 freeway. The bus will leave at 9 AM, so attendees should be there at 8:30 to board. To avoid overtime costs, the bus will leave the show at 6 PM. Heidi thanked Alice for her efforts in obtaining the bus and organizing the trip.

Newsletter editor Sandy Bradfield published her first Newsletter this month. She announced that articles are much appreciated. Extra copies are in the back of the room.

2009 Quilt Show chair Rasa Read discussed filling the white glove and selling the opportunity tickets at the Long Beach show. Then, she modeled a tie dye blue spiral tee shirt that the Board purchased in a limited number as a trial run to advertise the 2009 Show. They have arrived in time for members to wear on the bus trip to Long Beach. Price is \$15. There were numerous positive comments about the shirts.

Block-of-the Month theme for this year was presented by Carol Jacobson. Next months' block is called *A Whole Galaxy of Stars* and features double geese using an easy new technique.

Show and Tell was next with Brigit Siegel holding the quilts.

Membership chair Frances Brannon announced that 85 members are present tonight; with 6 guests and 2 new members.

Door prizes were donated by Pat Rollie, Candy's Quiltworks, and the Fabric Patch. The Boobie Prize was won by Dottie Ahrens.

After the break, Barbara Gibson, programs chair, asked members to recommend speakers for 2009, keeping in mind that the budget is half the amount of the previous year. The August meeting will be an ice cream social, which Alice began last year. This year we are adding pie and fresh fruit and a western theme. Those members attending with cowboy hats, jeans, etc. will receive an extra door prize ticket.

Featured speaker Phyllis Brinkley presented a brief history of her career, followed by brief lesson: *"Showing Depth and Space in Landscape Quilts"*. Highlighted in her presentation, were recommendations for supplies, brief art lessons, and a demonstration of building a landscape.

The meeting was adjourned at 9:10 PM.

Respectfully submitted,
Susan Edwards
Corresponding secretary



CALENDAR OF EVENTS

August 28 - 30

27th Annual San Diego Quilt Show
San Diego Convention Center
111 W. Harbor Drive, Hall F
Admission \$8.00
Thursday & Friday: 10 AM - 6 PM
Saturday: 10 AM - 5 PM
For info call: 619-443-2706
Or contact by e-mail:
sdqs2002@hotmail.com
www.sandiegoquiltshow.com

September 13

Bobbi Bullard
Presented by: ASG - Los Angeles Chapter
Shoshone Room
Cal State Northridge
9:30 AM - 3:30 PM
For more info:
www.ASGLA.org

September 13 & 14

Almond Country Quilt Guild Show IX
"A Gathering of Quilters"
Paso Robles Event Center
2198 Riverside Avenue
Paso Robles, CA 93446
Saturday: 10 AM - 5 PM
Sunday: 10 AM - 4 PM
For more info:
Email: czelus@gmail.com or
www.almondcountryquilters.org

September 21

Napa Valley Quilters Show 2008
"Wine, Women & Quilts"
Justin Siena High School
4026 Maher Street, Napa, CA
Sunday only: 10 AM - 5 PM
Adults \$6.00 & Free Parking
For more information go to:
www.napavalleyquilters.org

October 3 & 4

Santa Barbara Quilt Show
Over 200 guild quilts for this judged show
Plus wearables, home décor & fabric art
Classes booking now.
For more info:
Email: dkisch@att.net
www.coastalquilters.org

October 18

Phyllis Binkley
Landscape Workshop
43723 Pioneer Avenue
Hemet, CA 92544
Saturday only - 9 AM - 3 PM
Materials fee: \$45.00
For more info:
Email: PhyllisBinkley@yahoo.com
951-306-0919

October 18 & 19

Simi Valley Quilt Guild Show

Free parking.
For more info:
Email: serialquilter@dslextreme.com
www.simivalleyquiltguild.org

Membership Note:

~ ~

If you know of a special event or date,
announce it in the newsletter.
Email info, dates & times to the Editor:
Sandy Bradfield
sandyb@usa.com

Editor's Corner



Hello, everyone . . .

Ok, on to the second issue. Here's a huge "THANK YOU!" to those who submitted announcements for this month's newsletter. I will be asking for more info for the September issue too, so start thinking now.

A suggestion was made last month to provide a feature article about a member of our Guild. Please submit names by the General Meeting to give enough time for an interview & picture before the next issue.

Until next month,

Sandy

AFFILIATE HAPPENINGS & NEWS

■ **For Sale:** Kenmore Model 1316 sewing machine in a wood cabinet with matching chair with storage & lots of accessories, circa 1950-61.
Singer Featherweight sewing machine, black with gold trim, with case & accessories.
Contact Greg Karacas at 818-845-5824

■ **Mayhall's Sewing Center (New Affiliate)**

Althea Kennedy
2252 Honolulu Avenue
Montrose CA 91020
818-249-2466
Hours Mon-Sat 10 AM - 6 PM

Bernina Sewing Machines & products, notions, service and sales. For more info, email:
mayhallssewingcenter.com



■ Now is the time to begin planning your entry for:

"Challenge Contests for 2009".
Theme: **"Heavenly Bodies":**

Challenge 1: Theme-Oriented Small Quilt

(18 to 24" in any configuration.

Wearables - (jacket, vest, skirt or apron, etc.
Postcards

Challenge 2: "Do not Touch Signs" (approximately 9 x 12" in the configuration of your choice & using a theme fabric.

Intent to enter deadline: March 12, 2009

Submission deadline: March 26, 2009

A LAST LOOK BACK...

Last year's BOM committee very generously created an added incentive to encourage BOM participation by completing a quilt made from each of the blocks they had selected... and then offered it as a prize for one lucky member whose name was drawn at the end of their year!

Thank you to Las Pulgas - it's beautiful and shows what we all can do with those winning BOM blocks!!!



Congratulations to Lettie Williams
for winning the gorgeous "Birthday Jewels" quilt!

GENERAL GUILD INFORMATION

VOLUME XXVIII NO. 2

www.GlendaleQuiltGuild.org

Glendale Quilt Guild, Inc. is a non-profit corporation. The purpose is to contribute to the knowledge of, and to promote the appreciation of, fine quilts, quilting and collection; to gain knowledge of quilt techniques, patterns, history and quiltmakers through educational meetings, travel and friendship.

Meetings are held the 2nd Wednesday of every month at the

Glendale Central Library Auditorium, 222 East Harvard Street, Glendale, California

Social Time: 6:30 – 7:00 PM. Meeting begins at 7:00 PM. Guest fees: \$5.00 per meeting.

Membership dues are payable July 1 and are delinquent at the end of the August General Meeting.
Active Members: \$30.00, Seniors (62+ years): \$25.00, Affiliates: \$35.00, Newsletter Only: \$30.00

The newsletter is a monthly publication of the Glendale Quilt Guild. Members are invited to submit items of interest for publication at the General Meeting or by E-mailing Sandy Bradfield at: sandyb@usa.com.

SUBMISSION DEADLINE IS THE MONDAY AFTER THE GENERAL MEETING.



AFFILIATES

A QUILTER'S DREAM

150 N. San Gabriel Blvd. Ste.500
Pasadena, CA 91107
Tel: 626-744-2779
www.aquiltersdream.com

AZABU-YA/ MK CONCEPTS

3019 Pico Blvd., Suite 5
Santa Monica, CA 90405
Tel: 310-828-8046
www.azabu ya.com

BETTY'S PHOTOS ON FABRIC

P.O. Box 1336
Alta Loma, CA 91701
Tel: 909-987-3341

THE CALICO HOUSE

1279 E. Imperial Highway
Placentia, CA 92870
Tel: 714 993-3091

CANDY'S QUILTWORKS

8917 Reseda Blvd.
Northridge, CA 91324
Tel: 818-349-SEWS (7397)

COZY COTTAGE FABRICS

740 N. Brea Blvd
Brea, CA 92821
Tel: 714-529-2999

EMMALINE'S

1203 N. Catalina Street
Burbank, CA 91505-2326
Deb91505@yahoo.com

FRANK'S VACUUM & SEWING ACHINES

2145 Verdugo Road
Montrose, CA 91020
Tel: 818-248-5411
www.fransvacuumsewing.com

LEAH'S FABRIC GALLERY

1321 E Katella Ave
Orange, CA 92867
Tel: 714-639-1555

NEW MOON TEXTILES

1393 E. Washington Blvd.
Pasadena, CA 91104
Te626-296-6663
newmoontextiles.com

PATCHWORK PENGUIN

6477 Foothill Boulevard
Tujunga, CA 91042
Tel: 818-352-7300
Fax: 818-352-3544
thequiltingnut@patchworkpenguin.com
www.patchworkpenguin.com

POLLARD'S SEW CREATIVE

780 S Arroyo Pkwy
Pasadena, CA 91105
(626) 795-9907
A N D
71934 E. Route 66
Glendora, CA 91740
626-335-2770
www.pollardsewcreative.com

QUILT 'N' THINGS

2411 Honolulu Ave
Montrose, CA 91020
Tel: 818-957-2287

THE QUILT ATTIC

106 Bridge Street
Arroyo Grande, CA 93420
Tel: 805-474-0717

THE QUILT EMPORIUM

4918 Topanga Canyon Blvd.
Woodland Hills, CA 91364
Tel: 818-704 8238

THE QUILTED ROSE

7151 El Cajon Blvd. Suite 0
San Diego, Ca 92115
Tel: 619-462-1848
www.thequiltedrose.com

SANTA BARBARA QUILTING RETREATS

311-A East Victoria Street
Santa Barbara, CA 93101
Tel: 805-899-3947
www.santabarbaraquilting.com

SEWING STUFF / SO MANY BOOKS

1336-A Railroad Street
Paso Robles, CA 93446
Tel: 805-238-2977

NEW AFFILIATE:

MAYHALL'S SEWING CENTER

2252 Honolulu Avenue
Montrose, CA 91020
Tel: 818-249-2466

Contact us at:

Glendale Quilt Guild

P.O. Box 5366, Glendale, CA 91221-5366

or visit:

www.glendalequiltguild.org

**MEETING: WEDNESDAY, AUGUST 13, 2008 @ 7:00 PM
GLENDALE CENTRAL LIBRARY 222 E. HARVARD BLVD., GLENDALE
REFRESHMENTS: A TO E**