



Newsletter

APRIL 2008 VOLUME XXVII NO.10

WWW.GLENDALEQUILTGUILD.ORG

**GENERAL MEETING:
WEDNESDAY, APRIL 9, 2008 • 7:00 PM**

Rest & Relaxation!

Guild members will have a “night off” as they enjoy this evening’s activities! They can:

- *Munch on our Salad & Dessert Potluck (please bring something you like to make...)*



Food Assignments

SALADS

A - E
L - Q

DESSERTS

F - K
R - Z



- Browse & shop at tables featuring some of our Affiliates and their wares
- *Pick up more 2008 Show Merchandise on sale (a souvenir of another job well done!)*
- See demos of quilt blocks / ideas for how to use the Jelly Rolls won in March
- *View some of the award winning quilts & other entries from “Threads of Time”*
- Show & Share new projects that might be make it into the 2009 show!

See you there...

Guild-Sponsored Workshops resume in May

President's Message



Presidential Tidbits

Well, the 2008 quilt show is behind us! THANKS to all members for helping, and a BIG THANKS to Michele Pusateri, our Quilt Show Chair. The Show Committee did a great job and we really APPRECIATE all the extra hours you gave to make this the "Big Show" that it was! Now we can all (briefly) relax, before thinking about the 2009 Show...

Please come to the April meeting for a relaxing evening. We hope to give out the Viewer's Choice Ribbons to the winners and maybe show a few of the winning entries. We are also planning a SPECIAL THANKS to our Affiliates. A number of them will have tables around the room with goodies you really must purchase. Some of them may also be bringing ideas for how to use the 2 1/2" strips you won at our Strip Poker Night!

At the April meeting you can also sign up for our May workshop with Joy Lily. It will be held on Thursday the 15th and she will teach us "Marbling on Fabric". I will be hosting Joy at my home after the general meeting and then taking her the next day to her workshop at the Patchwork Penguin.

Let's try to get a good turn-out for the first event after the show... I look forward to sharing some salads and desserts with you while we enjoy our R & R!

Alice Smith

P.S. Those of you who know me understand that I work best under a deadline... and this show was no different! I entered 3 quilts on time, as well as 4 wearables, but my Challenge Vest needed the binding turned and sewn by hand. So, during my 3 pm meeting at the Marriott, I finished my vest by 5 pm on Wednesday! At this time of year I am always promising myself that next year I will have plenty of time to finish everything before the picture deadline. Maybe this time I can keep my promise since I will no longer be President after June. Wish me luck!

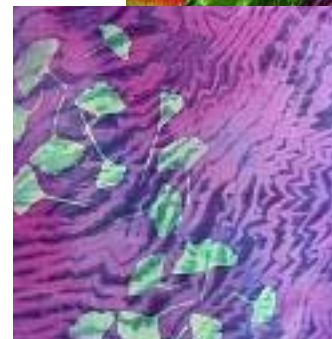
May 2008 Joy Lily

Marbling on Fabric

Joy will be demonstrating the technique she uses to "marble" on fabrics with dyes. Details for the workshop are still coming, so meantime here are some beautiful samples of her work... Enjoy!



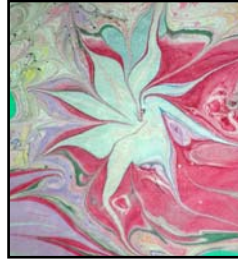
For more information on Joy,
please visit her web-site at:
www.joy-lily.com.



Meeting News

FUTURE PROGRAMS AND WORKSHOPS

- April 9, 2008 Guild Event: *Rest & Relaxation*
Dessert and Salad Potluck
No Workshop.
- May 14, 2008 Joy Lily - Program:
Dyeing to Tell You
- May 15, 2008 Joy Lily - Workshop:
Marbling on Fabric
- June 11, 2008 Guild Event: *Officer Installation & Block Exchange*
- June 14, 2008 Guild Workshop: *Block of the Month assembly*
- July 9, 2008 Phyllis Binkley - Program:
Showing Depth & Space in Landscapes
- July 12, 2008 Phyllis Binkley - Workshop: *Painting with Fabrics*
- August 13, 2008 Guild Workshop: *Ice Cream Social*
No Workshop.



To sign up for a workshop,
please contact Louise Rupp
at 323.667.3256 or louise_r@pacbell.net



MEETINGS

BOARD MEETING
April 3rd
6:30 pm

Glendale
Central Library
upstairs
Board Room

* * *

GENERAL MEETING
April 9th
7:00 pm

Glendale Library

* * *

LOVING HANDS
April 11th
10:00 am - 5:00 pm

1038 E. Elmwood
Burbank

* * *

2008 SHOW WRAP-UP
April 15th
7:00 pm

Glendale
Central Library
upstairs
Board Room

Hospitality

This month we're having
a themed potluck
of Desserts & Salads...

Please check Page 1
for alphabetical listing.



*We're trying to have "Rest & Relaxation" in April
as we head into Spring... How about showcasing some
pretty pastel decor this month to get us in the mood?*



Threads of Time

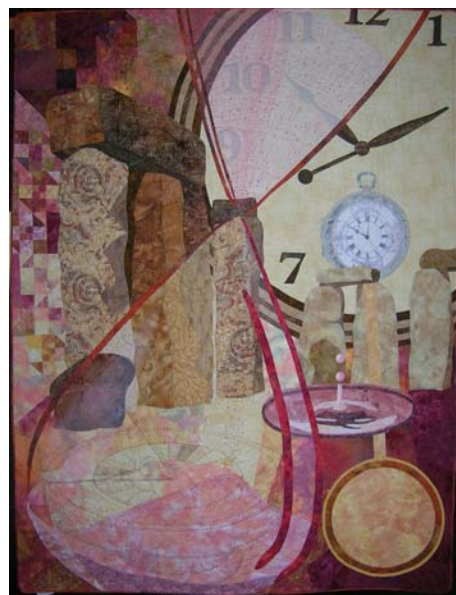
The 2008 show is finished, and next month we will print the list of all the award winners, plus showcase many of the entries... Many thanks to everyone for participating and making it a special event!

Congratulations to the winners and all the entrants...
It was a beautiful show!

Michele Pusateri



Here are this year's Best of Show quilts (both professional and amateur), as well as President Alice Smith's "Memories in Threads" which won First Place in the Show Theme (large) category. ☺



Congratulations to the winners and all our entrants...

It was a beautiful show!



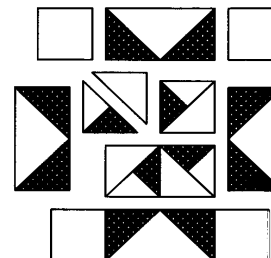
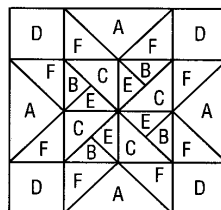
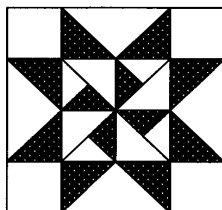
Hello, everyone!

If any of you would like to make any star blocks to add to the 2009 Opportunity Quilt, I welcome all contributions! There is an article in the March newsletter with the specific sizes. We are still looking for a few more stars, so I am providing a couple of patterns below, as well as a web-site to check out for the quilter who inspired this project - she has a wonderful tutorial for "Maverick Stars", <http://quiltville.com/maverickstars.shtml> Make as many as you can - the Universe is big & wide!

Rasa Read
2009 Quilt Show Chair

Martha Washington Star

4-Unit Grid
Color Illustration: page 20



FINISHED BLOCK SIZE						
<i>Single dimensions in the cutting chart indicate the size of the cut square (3" = 3" x 3").</i>						
	4"	6"	8"	9"	10"	12"

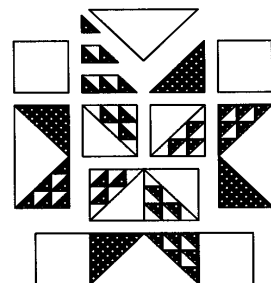
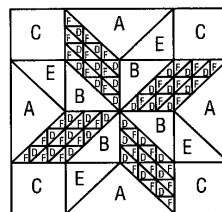
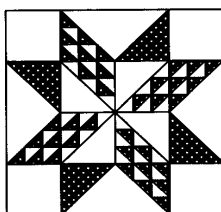
FOR 1 BLOCK:

Light	A: 1		→		3 1/4"	4 1/4"	5 1/4"	5 3/4"	6 1/4"	7 1/4"
	B: 1		→		2 1/4"	2 3/4"	3 1/4"	3 1/2"	3 3/4"	4 1/4"
	C: 2		→		1 7/8"	2 3/8"	2 7/8"	3 1/8"	3 3/8"	3 7/8"
	D: 4				1 1/2"	2"	2 1/2"	2 3/4"	3"	3 1/2"
Dark	E: 1		→		2 1/4"	2 3/4"	3 1/4"	3 1/2"	3 3/4"	4 1/4"
	F: 4		→		1 7/8"	2 3/8"	2 7/8"	3 1/8"	3 3/8"	3 7/8"

Try This: Use a medium instead of a light for B and C.

Twinkling Star

12-Unit Grid
Color Illustration: page 27



FINISHED BLOCK SIZE						
<i>Single dimensions in the cutting chart indicate the size of the cut square (3" = 3" x 3").</i>						
	6"	7 1/2"	9"	10 1/2"	12"	15"

FOR 1 BLOCK:

Light	A: 1		→		4 1/4"	5"	5 3/4"	6 1/2"	7 1/4"	8 3/4"
	B: 2		→		2 3/8"	2 3/4"	3 1/8"	3 1/2"	3 7/8"	4 5/8"
	C: 4				2"	2 3/8"	2 3/4"	3 1/8"	3 1/2"	4 1/4"
	D: 18		→		1 3/8"	1 1/2"	1 5/8"	1 3/4"	1 7/8"	2 1/8"
Dark	E: 2		→		2 3/8"	2 3/4"	3 1/8"	3 1/2"	3 7/8"	4 5/8"
	F: 18		→		1 3/8"	1 1/2"	1 5/8"	1 3/4"	1 7/8"	2 1/8"

Try This: Use several different darks for F.

Membership



NEW MEMBERS



Please welcome:

Armida Garcia
Truei Hold
Elizabeth Torbati

NEW BOARD MEMBERS

Frances Brannon, whom you were introduced to in this column last month, is currently hard at work up-dating the guild's data-base. She is keeping the mailing list current, which ensures that every registered member will receive guild materials and also be acknowledged in the newsletter for their birthday.

To assist her, Dovie Kapoh has volunteered to come on board as Membership Co-Chair. They make a great team and we thank them for jumping right in! Please keep them informed if you have any changes to your contact information, as they will need to know that for our roster.

Not pictured are members Paula Thompson, who volunteered at the last meeting for the Treasurer's position and Barbara Gibson, who volunteered to be Program Chair. *Thank you!!!*



Thanks Dovie!

Happy Birthday

Belated Wishes !

Meryl Ann Butler	March 6	Susan Fredericks	April 14
April Birthdays:			
Jeanne Tan-Mar	April 1	Jasmine Vorperian	April 16
Lorelei Snee	April 4	Barbara Dieges	April 18
Crystal Dudley	April 6	Catherine Mullen	April 20
Kathy Taylor	April 6	Carol Rossow	April 21
Karen Valderrama	April 8	Pat Akers	April 22
Trudy Badovinac	April 10	Cathy Euler	April 23
Darlene Mezak	April 10	Suzanne Curtis	April 24
Lois Stelzer	April 11	Francine Loomis	April 25
Nancy Wagner	April 12	Karen Millman	April 26
Diane Sullivan	April 13	Jean Giacomelli	April 28
		Jalayne Troyanek	April 29

GQG BUS TRIP TO LONG BEACH

SAVE THE DATE !

The GQG is planning a road trip by chartered bus to the Long Beach Quilt Show on July 25th... The show opens at 10 am, so it will be an all-day trip. A central location will be chosen for pick-up/drop-off and it will probably be a Park & Ride location. Katsy Chappell and Alice Smith are putting it together now, and will give us more details at the April General Meeting.



GUILD MEMBERS' ACTIVITIES

When GQG Program Co-Chair Katsy Chappell is not busy arranging bus trips or other activities for the guild, you can catch her on a different type of program this month... tune in to see Katsy on an episode of ER which will air on Thursday, April 10th.

Can we send write-in votes for an Emmy?

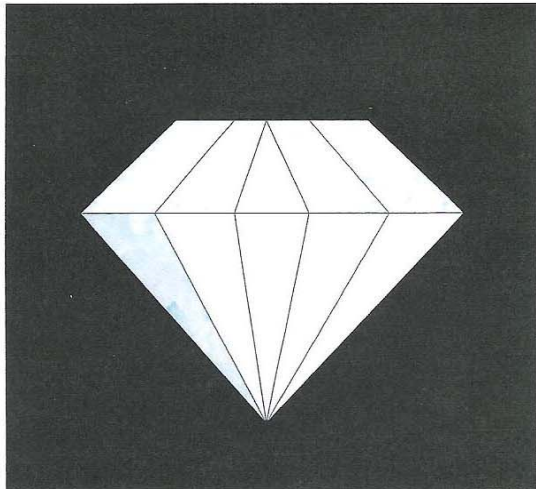


Guild member Meryl Ann Butler is currently featured in two quilt magazines. "Rite of Spring" is an article in May '08 *McCall's Quick Quilts* on making a lap quilt based on her 90-Minute Quilt techniques. April '08 *Quilter's World* features Meryl Ann in "Quilters Make a Difference" column, describing quilts she made last year for Virginia Tech and for her daughter, who was a student there at the time of the shootings. Meryl Ann is the author of the book *90-Minute Quilts*, which she has donated to the guild library. More info. at: www.90minutequilts.com

APRIL 2008

This month's block is called

DIAMOND



April showers and diamonds are girl's best friends. This month's project is a foundation paper piecing pattern. Fabric selection is as individual as you are. We selected light to medium blue and grays for shading.

The best part is that you probably have all you need for these pieces in your leftover stash! Just to guide you we recommend:

- three very light shades
- three light shades, and
- two medium shades.

Play with them and make your diamond sparkle.

For this foundation paper piecing project select shades of blue to blue gray. Or go for a Jennifer Lopez pink diamond! Basic foundation piecing instruction is easy as one, two, three, four, and five:

1. **Attach** the pieces in the numeric order indicated on the foundation paper section.
2. **Cut** the pieces of fabric large enough to cover the piece plus at least a quarter inch allowance. Place the piece of fabric on the back of the foundation paper with the wrong side of the fabric facing the back of the foundation paper.
3. **Cut** the second piece of fabric large enough to cover area #2 and the quarter inch allowance. Turn the foundation paper over to the marked side of the paper and sew on the line connecting fabric piece #1 and #2.
4. **Turn over** piece #2 and check to make sure there is ample coverage then trim the fabric stitching with a quarter inch allowance and press.
5. **Repeat** steps until the section is complete.

Once all sections are complete; trim the edges to a perfect quarter seam allowance before connecting them to finish the block. Remove the paper from the backside of your beautiful block!

NOTE: This is a paper-pieced template.

If you need copies, please contact Gloria Flores:
626.281.4306

Meeting Reports



Glendale Quilt Guild Executive Board Meeting Location: Glendale Central Library Date: March 6, 2008

Present: Alice Smith, Heidi St. Royal, Pat Grim, Jean Giacomelli, Michele Pusateri, Susan Edwards, Sandy Bradfield, Sabine Steinmetz, Nancy Mraz, Sue Vite, Katsy Chappell, Louise Rupp, Frances Brannon.

Meeting called to order at 6:30 pm.

Due to time constraints, the meeting began with Michele Pusateri and her status report for the 2009 Show. She reported that the Marriott renovations will not be complete prior to show, causing us to relocate the class registration desk to the breezeway area. Signage will be required to direct attendees. Guild & vendor setup has also been delayed until after the decorator has finished - after 8 pm on Thursday the 26th. Access on Friday will begin at 6 am. Meet and Greet wine & cheese reception will be Thursday from 4 - 6 pm. Six instructors will be there and board members are asked to attend as well. Judging will continue all day Thursday and quilts may be hung once the room is available.

Sue Vite announced the girl scouts will be available as volunteers on Sunday, March 30. They receive community service credit for assisting with the show.

The last show meeting will be on Tuesday, March 18. All committee members should attend. Space is still available for classes, and this will be discussed in detail at the general meeting. Alice suggested donating a couple of free class

tickets or parking passes as door prizes. Publicity has placed a show announcement in Quilter's Newsletter magazine. A wrap-up meeting has been scheduled for April 15th. Pat Grim & Alice Smith will meet with hotel staff to finalize contractual fees and commitments. Current contracts with the Marriott end in 2010.

Minutes - There was a typo in the February General Meeting Minutes. Country Store registration form was incorrect in that you have a choice of donating from 15% to 100% of the proceeds of sale items to the guild. There was also an omission: the Nominating Committee was not added into record in the minutes. The seven committee members are: Pat Grim, Alice Smith, Marilyn Green, Melinda Henschler, Karen Millman, Caren Ryan & Lori Snee. With these changes, the minutes were voted upon and passed by the board.

Finance - Nancy presented the statement of accounts and budget results. The finance report was voted upon and passed as written.

Heidi St. Royal reported on plans for the general meeting and the Jelly Roll Strip Poker planned for the second half. There will be a dealer at each table & instructions will be provided. Vendors have been generous and we have a lot of prizes to give out.

Newsletter - Sabine Steinmetz reported that April will be the last month she will mail the newsletter to anyone who has not registered to receive a mailed copy. The complete newsletter is available on the website in color. Sabine also reminded the board that her position will need to be filled for the new term.

The printing of the show program was discussed and the final deadline will be March 14.

Correspondence - Susan Edwards sent cards to the following people: Get Well for Norma Drown & Jane Lay; Mary Helen Freedland sent a note to the Guild expressing her pleasure at keeping in touch via the newsletter. Susan sent a greeting card from the Guild, saying hello and wishing her continued involvement with our Guild.

Membership - A motion was made for Frances Brannon to assume the position of Co-Chair to assist Jean Giacomelli. The motion passed unanimously. Jean will be printing 50 more directories. Frances has prepared a complete Excel membership data-base.

Alice Smith discussed plans for the general meeting on April 9th. We will ask our affiliates to man tables and demonstrate quilt blocks using the jelly rolls won during the Strip Poker games from the March meeting. Sue Vite will e-mail the affiliates & they will be allowed to sell merchandise at their demo tables. Any remaining show merchandise will also be available for sale. Alice will be hosting the May speaker, Joy Lily, in her home. Joy will present "Dyeing to Tell You" on May 14th and will present "Marbling on Fabric" at her May 15th workshop. In June, we have Officer Installation & a block exchange. A July 4th theme was discussed, as well as a pattern.

Loving Hands will meet on March 14. Pat Grim announced a letter of thanks from the Indian Council for our donations to the Women's & Children's Hospital each year. It was recommended that we give twice a year - Spring or Fall - in addition to Christmas, since few charities are available during other times of the year.

Long Beach Bus Trip - Katsy Chappell gave an up-date on bus information and will continue to research group pricing for attending the Long Beach show on July 25th. A central location is to be chosen for pick-up/drop-off and a Park & Ride location was suggested. The show opens at 10 am, so it will be an all-day trip. This will be discussed at the general meeting to check interest among guild membership.

Meeting adjourned at 9:00 pm.

Respectfully Submitted by:

Sandy Bradfield,
Recording Secretary

Reports (cont'd)

Glendale Quilt Guild General Guild Meeting

Location: Glendale Public Library
Date: March 12, 2008

President Alice Smith explained the door prize raffle tickets for either show classes, show parking or regular door prizes. Buy tickets at 3 for a dollar, 7 for two dollars. The drawing will be after the break.

Alice thanked those who worked on the opportunity quilt for this year, Mary Ann Andrews, Rasa Read, Alice Turner and Linda Huber. Anyone who worked on the quilt please contact Alice as she is making the label and wants to give credit to all who contributed to its completion.

The minutes for February, 2008 were approved as corrected. Regarding the Country Store, one can donate rather (not receive) 15%. Members of the nominating committee include Pat Grim, Alice Smith, Marilyn Green, Melissa Helscher, Karen Millman, Caren Ryan, and Lori Snee.

Nancy Mraz presented the treasurer's report which was approved as read.

Co-Corresponding Secretary, Susan Edwards, read a letter of hello from Mary Helen Freedland who has moved. She then reported on cards sent since the last meeting.

Nan Maples was pleased to announce the substantial number of quilts submitted for the show and that 40% were from Glendale Quilt Guild.

Sue Vite discussed the upcoming programs and that the American Sewing Guild is trying to start a new chapter in Los Angeles. There will be a meeting at Pollards from 10 to 12 on March 22. She also announced that at our next meeting there will be a door prize of a \$200 gift certificate to the Santa Barbara Quilt Retreat. Her term as Program Chair is up in June and she is looking for a replacement and offered as much help as needed.

Sabine Steinmetz has a sign up sheet and pen up front for anyone who would like to continue receiving the Newsletter by mail starting in May. She is also looking for someone to do the newsletter, which will also be vacant in June.

Paula Thompson volunteered for the Treasurer's position and Barbara Gibson volunteered for Programs.

2008 Show Reports: Caren Ryan - banquet speaker is Robbie Joy Ecklow; 12" quilts for centerpieces are being made by members; she's hoping for a 100 people to attend. Linda Rasmussen, representing Designing Ladies stated the fashion show is only \$15; Heidi is the mistress of ceremonies; Nick St.Royal will play the piano; and there are about \$500. worth of gift certificates as give-aways. Pat Golditch - volunteers were thanked for signing up because it is a lot of

work contacting people who have not yet signed up. Michelle Pusateri - sign up for classes by contacting her; take-in on Wednesday starts at 4:30 with a 15 minute free parking for a fast drop off; turn in your opportunity tickets. Pat Grim - stay at the hotel to help meet our quota and save the guild \$8000. Loving Hands needs quilts for Womens and Childrens Hospital for this summer. And please let them know if someone in the guild or friend or relative needs a quilt for an up-lift. Sandy Bradfield - signs; the 21st is the deadline for turning in forms to request a sign.

Continued on Page 10

EXECUTIVE BOARD 2007 - 2008

PRESIDENT	Alice Smith	626.796.2332
VICE-PRESIDENT	Heidi St.Royal	818.841.3451
WORKSHOP CHAIR	Louise Rupp	323.667.3256
PROGRAM CO-CHAIRS	Katsy Chappell	818.752.3732
	Sue Vite	818.249.4238
2008 QUILT SHOW CHAIR	Michele Pusateri	626.441.8212
2009 QUILT SHOW CHAIR	Rasa Read	323.257.7404
RECORDING SECRETARY	Sandy Bradfield	818.506.0673
CORRESPONDING SECRETARY	Susan Edwards	818.790.2214
TREASURER	Nancy Mraz	818.890.3337
PARLIAMENTARIAN	Pat Grim	818.243.9672
MEMBERSHIP CO-CHAIRS	Jean Giacomelli	626.281.6639
	Frances Brannon	818.241.6507
	Dovie Kapoh	323.225.1891
NEWSLETTER	Sabine Steinmetz	818.955.5147

COMMITTEES 2007 -2008

LIBRARIAN	Sue Van deVyvere	818.845.5373
HOSPITALITY	Darlene Mezak	818.248.8102
	Peggy Schiffman	<i>to come</i>
EQUIPMENT/INVENTORY	Sharon Bishop	323.254.6045
PHILANTHROPY	Nancy Foote	818.567.0391
HISTORIAN	O P E N	
LOVING HANDS	Nancy Foote	818.567.0391
	Pat Grim	818.243.9672
BLOCK OF THE MONTH	Las Pulgas c/o	
	Gloria Flores	626.281.4306
SCCQG REPRESENTATIVE	Heidi St. Royal	818.841.3451
SHOW & SHARE	Marilyn Green	818.846.8862
GUILD 800# & E-MAIL	Kathy Flint	818.985.5594
PUBLICITY	Esther Norbut	818.249.4742
	Pat Atkins	323.221.6865
WELCOMING COMMITTEE	Loretta Bradley	323.661.9155
FRIENDSHIP GROUPS	O P E N	
TELEPHONE TREE	Anne Browne	818.790.3046
	Gail Powell	818.842.6450

GENERAL MEETING (cont'd.)

Heidi St. Royal - Country Store is a great way to clean out your quilting closet and make money.

Membership Co-Chair, Jean Giacomelli, introduced Frances Brannon and Dovie Kapoh who will be the new co-chairs for this position. There were 86 members, 1 guest and 3 new members present. Welcome to new members Trudy Holt, Liz Torbati and Armida Garcia.

2009 Quilt Show Chair, Rasa Read, showed the collection of star blocks received to date, placed against a dark blue/purple fabric. She needs about 100 blocks for the quilt.

Crissa from Patchwork Penguin apologized for not having a shuttle to show this year. She also thanked the guild for their support. Rob Appell stayed 2 extra hours at our February workshop and the dyeing workshop will also be held at the Patchwork Penguin.

Block-of-the-Month - Las Pulgas

friendship group held the drawing for the 20 blocks this month, and there were 2 winners: Linda Brown and Beverly Underwood. Las Pulgas also showed a finished birthstone quilt which will be awarded in July to a lucky member who participated in block-of-the-month this past year.

Door prizes donated by the Show Committee were for Marcia Pollard's MP3 class, Deb Karash Spkey class, Debroah Sylveser Doodle and Textile Art class, parking for 5 winners, a ticket for Designing Ladies Fashion Show, and donations from Quilt N' Things, Patchwork Penguin, Leah's Fabrics, Ellen Craig Dyeing for You, Candy's Quilt Works. The Boobie Prize was won by Pat Rollie.

Heidi explained the strip poker game and the members participated.

The meeting was adjourned at 9pm.

Respectfully Submitted,

Susan Edwards

NOMINATING COMMITTEE

Many thanks to this year's Nominating Committee: Pat Grim, Alice Smith, Marilyn Green, Melinda Helscher, Karen Millman, Caren Ryan and Lori Snee. They have been busy recruiting volunteers to fill the vacant GQG Board positions for the 2008 - 2009 year. At press time, they still had a few positions to fill, including Newsletter Chair and 2010 Quilt Show Chair. (Yes, we really have to think about that one already too!) The Committee will present their nominations at the April General Meeting and we will be voting in May. The new Board will then be installed at the June General Meeting when we roll over our fiscal year.

2009 OPPORTUNITY QUILT



Here is a first look at the astronomical effort members have put into making blocks which will soon be our 2009 "Cosmic Connections" Opportunity Quilt...

What a dazzling display!

CALENDAR OF EVENTS



April 26 & 27

Associated Quilt Guilds

of the Central Coast present
"Seven Sisters Quilt Show"

Alex Madonna Expo Center

at the Madonna Inn

100 Madonna Road, San Luis Obispo

Saturday: 9 am - 5 pm

Sunday: 9 am - 4 pm

\$7 for 1-day, or \$10 for a 2-day pass

For more info.visit: www.aqgcc.org

OR Write to: AQGCC

P.O. Box 16144

San Luis Obispo, CA 93406

May 17 & 18

Antelope Valley Quilt Assn's

31st Annual Show, "Spring Splendor"

Saturday: 10 am - 5pm

Sunday: 10 am - 4 pm

Quilt Auction - Sat. at 1 pm.

Antelope Valley Fairgrounds

Eliopulos Pavilion

2551 W. Avenue H, Lancaster

Admission \$7.00,

husbands and children free.

For more info.visit: www.avqa.org

or Call: 661-947-7604, 661-917-8746

E-mail Contact:

jharrington66@earthlink.net

June 6, 7 & 8

Central Coast Quilt Shop Tour

Fri. & Sat.: 9 am - 7pm

Sunday: 10 am - 5 pm

Enjoy special sales & win prizes!

www.centralcoastquiltshops.com

July 25, 26 & 27

International Quilt Festival

Long Beach Convention Center

300 E Ocean Blvd., Long Beach

Hours not yet posted, but

visit: www.quilts.com

for more details as they

become available...

*A Note
from the
Editor*



This issue will be arriving later than usual, as our quilt show fell on the last weekend of March. In order to get a few items in from the show, I had to push the printing and mailing deadlines back a few days after the 1st... My apologies. Reminder: Next month we will be paring down the mailing list to send only to those who signed up. (There will be another sign up sheet at the next General Meeting.)

However, while at the show, I heard a rumor that there might be a member willing to take on the Newsletter Chair position, and I will be very excited to hear the official announcement from the Nominating Committee at our April meeting. It also appears that the remaining positions will be filled, just in time for the turn-over of the Board, so the guild can get back to business immediately in June. (We always do!)

I have actually enjoyed serving on the Board and while it's a challenge putting the Newsletter together, it is also a fun, creative process, and I'm looking forward to seeing a new person's "stamp" put on it!

Many thanks to ALL who have sent in contributions during the last 22 months - with 2 more issues to go I will soon become a "roving reporter" so I can send articles and pictures to the new Editor. I offer her my best wishes and any help needed for an easy transition.

- Ed.

ASG L.A. CHAPTER

The American Sewing Guild has now formed a Los Angeles Chapter. For those of you that are members of the Orange County Chapter and wish to have their membership transferred please contact Jeanette Swanson at jeanette@asgla.org. By transferring your membership to Los Angeles, you will help fund local events which will benefit the new Los Angeles Chapter. This is a great opportunity for Los Angeles and its ASG Members. If not already a member, please consider joining. If you would like more information on the new Los Angeles Chapter, existing neighborhood groups, or forming your own group, please visit www.asgla.org or contact Sue Vite at smvite@aol.com.

LOVING HANDS

Loving Hands would be happy to get queen sized batting or pieces large enough to put in our quilts (40 x 45 plus a couple of inches). Our budget allows us to get 2 cases per year. We appreciate people donating batting as well as cotton fabric to us. Remember us when getting rid of colorful fabric or blocks you can't use.

"Thank you" to all that make our tops or finish them. We could use more finishers. It is a great way to practice your quilting technique(s).



Thanks -

Nancy Foote
& Pat Grim

\$\$ FOR SALE \$\$

ELLAGIO BABY LOCK

I am selling an Ellagio Baby Lock Sewing Machine for **\$2,000.**

(I paid \$6,000. for it)
Also selling a Baby Lock Serger for **\$225.**

Please call Bonita for more details:
818.395.1098

THANK YOU

The Guild would like to express our appreciation to the Affiliates (listed on the back of the newsletter) who consistently give us Door Prizes, offer discounts, provide work spaces, and are just generally a huge support to the Guild.

They are sometimes our "silent" partners, and we hope that you patronize their businesses often and are as generous to them as they are to us...

Many thanks!

GENERAL GUILD INFORMATION

VOLUME XXVII No. 10

www.GlendaleQuiltGuild.org

Glendale Quilt Guild, Inc. is a non-profit corporation. The purpose is to contribute to the knowledge of, and to promote the appreciation of, fine quilts, quilting and collecting; to gain knowledge of quilt techniques, patterns, history and quiltmakers through educational meetings, travel and friendship.

Meetings are held the 2nd Wednesday of every month at the

Glendale Central Library Auditorium, 222 East Harvard Street, Glendale, California.

Social time: 6:30 - 7:00 pm. Meeting begins at 7:00 pm. Guest fees: \$5. per meeting.

Membership dues are payable July 1 and are delinquent at the end of the August General Meeting.

Active Members: \$20., Seniors (62+ years): \$15., Affiliates: \$25., Newsletter Only: \$20.

The newsletter is a monthly publication of the Glendale Quilt Guild. Members are invited to submit items of interest for publication at the General Meeting or by E-mailing Sabine Steinmetz at: gardensbysabine@aol.com.

SUBMISSION DEADLINE IS THE MONDAY AFTER THE GENERAL MEETING.



AFFILIATES

A QUILTER'S DREAM

150 N. San Gabriel Blvd. Ste.500
Pasadena, CA 91107
Tel: 626-744-2779
www.aquiltersdream.com

AZABU-YA/ MK CONCEPTS

3019 Pico Blvd., Suite 5
Santa Monica, CA 90405
Tel: 310-828-8046
www.azabu ya.com

BETTY'S PHOTOS ON FABRIC

P.O. Box 1336
Alta Loma, CA 91701
Tel: 909-987-3341

THE CALICO HOUSE

1279 E. Imperial Highway
Placentia, CA 92870
Tel: 714 993-3091

CANDY'S QUILTWORKS

8917 Reseda Blvd.
Northridge, CA 91324
Tel: 818-349-SEWS (7397)

COZY COTTAGE FABRICS

740 N. Brea Blvd
Brea, CA 92821
Tel: 714-529-2999

EMMALINE'S

1203 N. Catalina Street
Burbank, CA 91505-2326
Deb91505@yahoo.com

FRANK'S VACUUM & SEWING ACHINES

2145 Verdugo Road
Montrose, CA 91020
818-248-5411
www.fransvacuumsewing.com

LEAH'S FABRIC GALLERY

1321 E Katella Ave
Orange, CA 92867
Tel: 714-639-1555

NEW MOON TEXTILES

newmoontextiles.com
626-296-6663

PATCHWORK PENGUIN

6477 Foothill Boulevard
Tujunga, CA 91042
Tel: 818-352-7300
Fax: 818-352-3544
thequiltingnut@patchworkpenguin.com
www.patchworkpenguin.com

POLLARD'S SEW CREATIVE

780 S Arroyo Pkwy
Pasadena, CA 91105
(626) 795-9907
A N D
71934 E. Route 66
Glendora, CA 91740
626-335-2770
www.pollardsewcreative.com

QUILT 'N' THINGS

2411 Honolulu Ave
Montrose, CA 91020
Tel: 818-957-2287

THE QUILT ATTIC

106 Bridge Street
Arroyo Grande, CA 93420
Tel: 805-474-0717

THE QUILT EMPORIUM

4918 Topanga Canyon Blvd.
Woodland Hills, CA 91364
Tel: 818-704 8238

THE QUILTED ROSE

7151 El Cajon Blvd. Suite 0
San Diego, Ca 92115
Tel: 619-462-1848
www.thequiltedrose.com

SANTA BARBARA QUILTING RETREATS

311-A East Victoria Street
Santa Barbara, CA 93101
Tel: 805-899-3947
www.santabarbaraquilting.com

SEWING STUFF / SO MANY BOOKS

1336-A Railroad Street
Paso Robles, CA 93446
Tel: 805-238-2977



MEETING: WEDNESDAY, APRIL 9, 2008 @ 7:00 PM
GLENDALE CENTRAL LIBRARY 222 E. HARVARD BLVD., GLENDALE
REFRESHMENTS: EVERYONE (SEE PAGE 1)

Contact us at:

P.O. Box 5366 • Glendale, CA 91221-5366

or visit:

www.glendalequiltguild.org