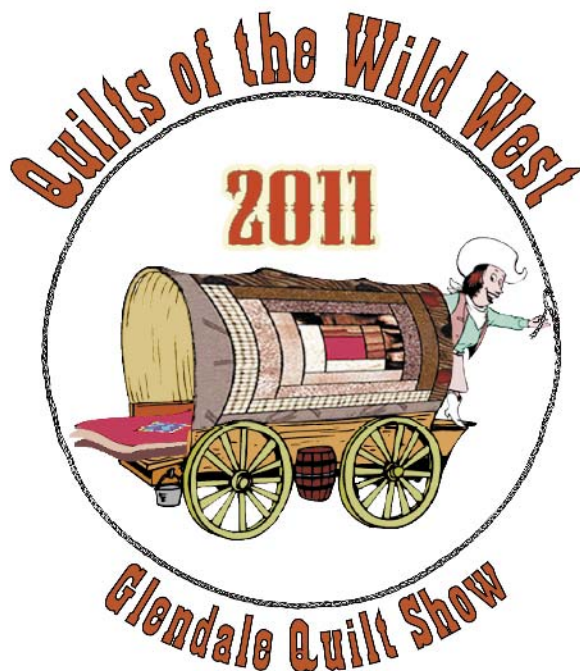


**32ND ANNUAL
GLENDALE QUILT GUILD**

FRIDAY
March 18
10 AM - 5 PM

SATURDAY
March 19
10 AM - 5 PM

SUNDAY
March 20
10 AM - 4 PM



**DAILY
DRAWINGS FOR
SEWING MACHINES**

Donated by
**KINGDOM
SEWING**

**POLLARD'S
SEW CREATIVE**

**SEWING
MACHINE
WAREHOUSE**

Admission: 12 years to adult \$9 • Three day pass \$15 • Guild Buses \$8 • Under 12 years FREE
HUSBANDS FREE ON SUNDAY

SPECIAL EVENTS

- Saturday Night Sampler
- Shopper's Rewards
- Silent Auction Continuing all 3 days
- Children's Treasure Hunt

EXHIBITS

- Beautiful quilts, professionally judged
- Doll Exhibit
- Small Quilt Contest
- Western Wear Contest

QUILTERS SHOPPING MALL

- Enjoy shopping at dozens of vendors

QUILTERS BOUTIQUE

Located in the Convention Center lobby, this is THE gathering place for quilt enthusiasts, and their friends. Many of the objects are made by Guild members.

GARDEN FOOD COURT

Delicious sandwiches, salads, chocolate, fruit, cold and hot drinks will be on sale outside the Marriott Convention Center.

ENTRY FORMS

Non members are also encouraged to enter quilts in our show. Applications are available on our website www.glendalequiltguild.org or write to:
Glendale Quilt Guild
P.O. Box 5366
Glendale, CA 91221-5366

OPPORTUNITY QUILT

We are excited to present to you "Log Cabin Rodeo!", our guild's opportunity quilt for our 'Quilts of the Wild West' show. Designed and quilted with love by our own buckaroos of the guild, Sharon Bishop, Kelly Nassiri, Doralee Dohnel, Rasa Read, Heidi St. Royal, and the finale quilting by Pat Rollie. What a group of cowgirls!

This could be yours with a \$1 ticket available at the show, or the registration form on our website www.glendalequiltguild.org. The luck of the draw will be on Sunday, March 20 at 4 PM.

PARKING

For quilt show attendees only — Special reduced parking rate. No in and out privileges.

FREE SEWING MACHINE DRAWINGS FRIDAY SATURDAY AND SUNDAY

To be eligible for the sewing machine drawings, you must fill out a Viewer's Choice Ballot and place it in the Viewer's Choice Ballot Box in the Convention Center Lobby.

One entry is good for all three days ••• Limit one entry and one prize per person

At the Burbank Airport Marriott Hotel & Convention Center • 2500 Hollywood Way • Burbank, CA 91505



SPECIAL EVENTS



Saturday Night Sampler

We've corralled a posse of talented teachers who will share their tricks of the trade as you move from table to table gathering lots of information to add to your quilting skills.

Shopper's Rewards

For every cumulative \$25 that you spend in our Vendor Mall, you will receive a chance to win one of our Shopper's Rewards Baskets.

Silent Auction

Continuous Silent Auction during all three days of the show with a "Buy It Now" feature, so that if you just can't wait, you can pay the Buy It Now price and take the item with you right then and there. The Silent Auction will close on Sunday at 4:00 p.m.

Children's Treasure Hunt

Once again Glendale Quilt Guild welcomes our young guests. Our Treasure Hunt is entertaining for kids and parents alike. So many fun things to find. Be sure to check it out at the Guild Information Booth in the Convention Center Lobby.



HOTEL LOCATION AND RESERVATIONS



Special Group Rates:

- Standard Room: 1 King bed or 2 Double beds, single or double occupancy - \$105.00 (plus tax), triple \$110.00 (plus tax), quad \$115.00 (plus tax)
- 1 Bedroom Suite: 1 King bed or 2 Double beds, single or double occupancy - \$150.00 (plus tax), triple \$155.00 (plus tax), quad \$160.00 (plus tax)

Reserve by February 16, 2011; after that date rates may change. To reserve online, go to <http://www.marriott.com/hotels/travel/burap?groupcode=gqggqga&app=resvlink> or call: (800) 228-9290 and be sure to mention Group Code GQG.



TO THE BURBANK AIRPORT MARRIOTT HOTEL

From LAX use Century Blvd. East to leave the airport and take I-405 San Diego Freeway North to the 101 Ventura Freeway East toward Los Angeles to the 134 Freeway East, stay in left lanes. Exit on Pass Ave., turn left over freeway. Turn right on Verdugo, left on Hollywood Way. 3 miles on right.

◀ BURBANK AIRPORT AREA MAP

Heading South on I-5 (Golden State Freeway): Exit on Hollywood Way, turn right. 1 mile on left.

Heading North on I-5 (Golden State Freeway): Exit on Hollywood Way, turn left under freeway. 1 mile on left.

Heading East on Hwy 134 (Ventura Freeway): Exit on Pass Ave., turn left over freeway. Turn right on Verdugo, left on Hollywood Way.

WORKSHOPS



Mary Ann Andrews

Mary Ann began teaching quilting in 1984 and soon realized she loved to inspire her students to achieve more than they thought they could. Mary Ann has won numerous ribbons at the Glendale show, including two Best of Show and is one of Glendale Guild's Master Quilters. In 2002 she received the Appliqué Society of

America's Merit Appliqué Master. She has exhibited at the Houston IQF, the AQS Paducah show, Road to California and NQA. She won Best Hand Workmanship at PIQF in Santa Clara, CA in 2006. Mary Ann's quilt "Currants and Currants and Currants and Cockscombs" was the cover quilt on the December 2004 issue of QNM. Mary Ann taught at our 2010 show and her classes were filled.

MA1 • Hand Quilting **\$65.00**
Friday, 3/18/11 **6 hours** **8:00 AM – 4:00 PM**
Beginner • No Machine **Kit Fee \$5.00**

Room: Producer A & B

Quilting by hand can be relaxing and calming – once you get the hang of it. This class will give you the basics and help you avoid the problems some people have. The class will also include some beginning quilting design such as drafting a motif to fit an area of your quilt. Supply list available on Mary Ann's website www.maryannandrews.net/home.



MA2 • Introduction to Hand Appliqué **\$65.00**

Saturday, 3/19/11 **6 hours** **8:00 AM – 4:00 PM**
Beginner • No Machine **Pattern Fee \$10.00**

Room: Producer A & B

Don't be afraid of the "A" word. With a little knowledge and skill, appliqué is relaxing and fun. You can make a lifetime's worth of appliqué quilts without getting to the more challenging stuff. Class will also include learning how to recognize the hard stuff so you can avoid it or find it. Supply list available on Mary Ann's website www.maryannandrews.net/home.

MA3 • Intermediate/Advanced Appliqué **\$65.00**

Sunday, 3/20/11 **6 hours** **8:00 AM – 4:00 PM**
Intermediate • No Machine

Room: Producer A & B

Want to learn appliqué techniques beyond the basics? Do you have appliqué problems and want to solve them? This is the class to do it

in. Bring questions and/or problems or just be ready to polish your techniques or learn some new ones. Supply list available on Mary Ann's website www.maryannandrews.net/home.



Thom Atkins

Thom Atkins has worked in many mediums including painting, stained glass, clay and bronze sculpture, fabric, landscape, and beads. He was introduced to beads in the early 70s and uses the Art Quilt as a canvass searching for a balance between beads and cloth, where each has an equal voice in the composition. One of his pieces was used on the 2006 invitation for the Houston IQF. His published work can be found in Lark Publishing's 500 Beaded Objects, The Art of Beaded Beads, Beaded Embellishment, in Margie Deeb's book, The Beader's Color Palette, and now, in a new book by C&T Publishing called Innovative Fabric Imagery. www.thomatkins.com



TA1 • Beads I: Bead Embroidery for Quilters **\$65.00**

Friday, 3/18/11 **6 hours** **8:00 AM – 4:00 PM**
Beginner • No Machine **Kit Fee \$25.00**

Room: Hollywood

This is an overview of beads and buttons and their use as embellishment on quilted surfaces. The techniques covered will allow students to actually quilt a piece with the application of the beads. We will learn and practice the four basic stitches and their variations. If time allows, we will look at edge stitches and fringe techniques. Then we will discuss what can be



done with the stitches, how they affect the surface, and how they can apply to your work. We will also review beads, the basic types, shapes and surfaces, what you might do with them and how to secure them. This class is about process, giving you a basic knowledge of beads, how, where, and when to apply them.

Supply List

- Embroidery Scissors
- Needle-nose pliers (optional)
- All else provided in the kit: needles, thread, fabric sandwich & variety of beads

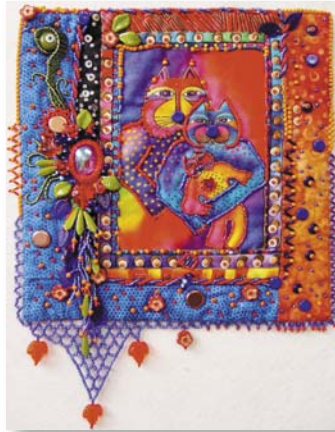
TA2 • Beads II: Beaded Bezels, Borders, Edges and Fringes \$65.00

Saturday, 3/19/11 6 hours 8:00 AM – 4:00 PM

Prerequisite Beads I • No Machine Kit Fee \$30.00

Room: Hollywood

Students will learn to make a beaded bezel to hold a glass or stone cabochon using backstitch and peyote stitch. They will learn various ways to create decorative borders of beads and pico edges. We will take a look at and practice fringe techniques and where they might be useful. This is a process class designed to make use of the stitches we learned in Beads I. Students will have a good understanding of what kinds of beads to use to create the effects they want.



Supply List

- Embroidery Scissors
- Needle-nose pliers (optional)
- All else provided in the kit: needles, thread, fabric sandwich, beads, vintage jewel



Sylvia Q. Davis

Sylvia has been a “crosscrafter” including sewing, knitting and crocheting almost all of her life. In 1993, she discovered quilting and all the other crafts went to the back of the closet. Shortly thereafter, she joined the African-American Quilters of Los Angeles.

Her quilts have been seen at PIQF, Road to California, the African-American History Museum, and the Riverside Museum. She is a member of the SCCQG, NCQC, and Quilts on the Wall Art Quilt Guild. She is a credentialed teacher and teaches at local quilt shops, in an Adult Education program, and in her home. Although she uses most of her quilts in classes, trunk shows, and workshops, she has sold a few quilts and has done several commissions. Her quilts would be considered “traditional”, however, her use of fabrics and design are richly colorful and exotic. www.easysite.com/sylviaquilts

SD2 • Grandma’s Puzzle \$65.00

Saturday, 3/19/11 6 hours 8:00 AM – 4:00 PM

Beginner • Sewing Machine Required

Room: Glendale

This makes a great scrap quilt, either coordinated scrappy or totally scrappy. Contrast (dark vs light) is very important for a striking outcome. I used only 4 fabrics to make 16 blocks; however, you could make each block a different fabric for a really scrappy look. You could use several different lights as backgrounds.

Supply List

- Five or six ¼-yard cuts or FQ of DARK prints
- 1 yd of LIGHT prints
- 1½ yd of LIGHT print for borders
- ½ yd of DARK print for binding
- 3⅝ yds for backing
- Twin size batting



SD3 • African Triad \$65.00

Sunday, 3/20/11 6 Hours 8:00 AM – 4:00 PM

Intermediate • Sewing Machine Required

Room: Glendale

The workshop begins with a perusal of each student’s fabric selections with my suggestions for placement. The use of my layout map makes the construction of this intermediate-level block foolproof. After completing one block, students are encouraged to use chain piecing to produce multiple blocks quickly. The strategy is shared for making the Kansas City Dugout border fit the center.

Supply List

- Sewing machine (oiled, new needle) with neutral thread
- BRCT & BSS
- Your sewing glasses
- Glue stick

Fabric Selection

- Each of the rings can be from a different fabric; coordinate the colors or mix them up. Good contrast to the background is important. I used “Africanesque” fabrics; you may choose any pleasing combination such as Christmas, black & white on a colorful background, mediums-darks on a light background, crayon color prints, bright floral prints, soft pastel floral prints, homespun plaids, 30’s collection, etc.
- Since the pieces are only 1½” showing, very large prints are not the best choice. Directional prints can be troublesome.
- Bring several collections to discuss their viability in this quilt.



Nan Maples

MQ1 • Mystery Quilt

Voucher* or \$65.00

Friday Evening, 3/18/11 6 Hours 6:00 PM – Midnight
All Levels • Sewing Machine Required

Room: Burbank

Come join the Six-to-Midnight-Gang for a fun Mystery Quilt Trail Ride. There will be two Mystery Quilts to choose from:
TENDERFOOT - satisfying, fun, forgiving BEGINNER
BRONC BUSTER - satisfying, fun, not so forgiving ADVANCED

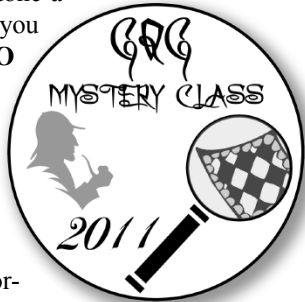
Yardage Requirements and Cutting Instructions will be provided for several sizes. If you've never done a Mystery Quilt class before, or even if you have, be sure to check out our **UFO**

Guarantee. All bolded resources plus **Supply List** will be posted to the GQG website www.glendalequiltguild.org by December 15, 2010.

Western attire is encouraged. You **must** reserve a place in the class. Those with the vouchers have priority. Space is limited. Reserve early!

*SPECIAL NOTE: You may have earned a **VOUCHER FOR A FREE MYSTERY QUILT CLASS** for each paid room night at the Burbank Marriott during the GQG Show in 2010. If you have *not* received a **VOUCHER** in the mail and think you earned one, please check with Workshop Registrations. If you are not on our list and spent a night at the Burbank Marriott during the Show in 2010, be prepared to show us proof (paid hotel statement, credit card receipt, credit card statement, or cancelled check) and we will gladly issue you one **VOUCHER** for each room-night paid.

Since this class ends very late, why not book rooms at the Burbank Marriott for you and your Podners?



blocks and variations. Discuss design and color possibilities and sewing techniques; then cut with the Kaleido-Ruler™, a tool that gives you the guidelines for cutting all of the triangles in the block. It eliminates making templates, simplifies accurate cutting and can be used for different size blocks. It is laser-cut from thick acrylic for rotary cutting, but can be used with a pencil and scissors.

Marti supplies the Kaleido-Rulers™ for you to use in class.

Supply List

- Sewing machine with neutral thread
- BRCT, BSS
- ½ yd of a light and ½ yd of a contrasting fabric.



MM1B • Seven Sisters Simplified — No Set-in Seams! \$40.00

Friday Afternoon, 3/18/11 4 Hours 1:00 PM – 5:00 PM
All Levels • Sewing Machine Required

Room: Burbank

The traditional Seven Sisters is a well-loved, but seldom made, quilt pattern. That should change with this simplified version which has completely eliminated set-in seams. Instead of being made with 60° diamonds and dot-to-dot seams, it is all straight line, edge to edge sewing. The class will include setting the quilt blocks together and a pair of bonus blocks that use similar techniques. Templates and 60° equilateral triangle ruler provided for class use.

Supply List

- Sewing machine with neutral thread and ¼" foot
- BRCT, BSS
- Optional: rotating mat

Fabric Selection

- 2 FQs, 1 for background and 1 for the Seven Sisters. Reproductions prints, both 19th century and 1930s look great. The classic blue and white is always a good choice.



Marti Michell

Marti Michell is a pioneer in the current quilt revival. She has contributed to the quilting industry as a teacher, quilter, author, publisher, manufacturer, designer, consultant, judge and quilt collector. She was the 2004 Silver Star honoree, a prestigious "lifetime achievement" award, at the Houston IQF. In 1991 she also received the first Michael Kile award

given for commitment to creativity and excellence in the quilting industry. Marti lives in Atlanta, GA, but was born and raised in Iowa. She received a B.S. in Textiles and Clothing and Home Economic Journalism from Iowa State University.

www.frommarti.com

MM1A • Kaleidoscope Creations \$40.00

Friday Morning, 3/18/11 4 Hours 8:00 AM – 12:00 PM
All Levels • Sewing Machine Required

Room: Burbank

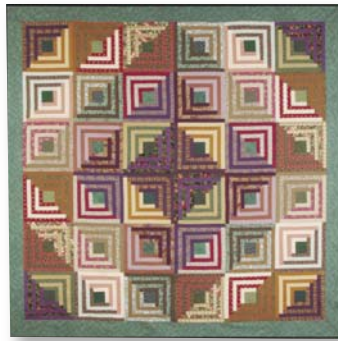
The Kaleidoscope pattern is easy to make, but because of the design possibilities, even advanced quilters can enjoy Kaleidoscope style

Supply List

- Sewing machine with neutral thread and ¼” foot
- Log Cabin ruler provided for class use
- BRCT, BSS

Fabric Selection

- 1 8” square for the centers
- 4 compatible FQs (NOT quarter yard cuts) using value for selection process:
- 1 FQ of dark fabric
- 1 FQ of light fabric
- 2 FQs of medium fabrics



Fabric Selection

- WIDE assortment of fabric, ⅛ or ¼ yd pieces or FQs
- Non-solids: batiks, landscape and fabrics that have movement (no tone on tones); with variety of motifs, and scale.
- Several values of each color. 4 or 5 fabrics similar in value; 3 fabrics for the distant mountains, each slightly varied in their value (for distance and perspective); 2-3 tree fabrics; many that could be used for ground/land, both near and distance.
- Sharing and trading is optional too



Sue Rasmussen

Sue Rasmussen, a diversified quilt artist, has been teaching for over 22 years. Sue has a degree in Textile Sciences from the U. C. Davis, and approaches quilting with a clear understanding of ‘how and why’. She and her quilts have appeared on TV and numerous publications, exhibited and competed in both national and international quilt shows. Her quilt, ‘Grizzly Bear’, has

won several ribbons, including Viewer’s Choice from PIQF and the Judge’s Awards from the Tokyo International Great Quilt Festival. Known for her fun attitude, Sue shares her extensive knowledge, coaxing the artist within to explore freestyle, no-marking machine quilting, graceful curved paper pieced flying geese, and beautifully pieced landscapes/pictorial quilts.

SR2 • Landscapes/Pictorial Quilts - Curved Machine Piecing \$65.00

Saturday, 3/19/11 6 hours 8:00 AM – 4:00 PM

Intermediate to Advanced • Sewing Machine Required

Room: Pasadena

Pattern Fee \$5.00

This is an introduction to the curved machine piecing for pictorial quilts. Students will cover design techniques, fabric choices, marking, sewing and pattern development working directly with fabric. To allow more time for learning the techniques, Sue designed a pattern “Single Tree Landscape”. Utilizing this pattern, students will learn the process of working on landscape quilts without taking hours to design an individual piece.

Supply List

- Sewing machine with neutral thread
- Fabric and paper scissors
- White fabric pencil such as Sewline Fabric Pencil or Quilter’s silver pencil and sharpener
- Yellow highlighter; colored pencils, markers or crayons
- Fine Pigma Micro Pens size 01 or 05, black and several colors
- Pencil, ball point pen, blue painters tape or masking tape
- Freezer paper 18” wide
- BSS with 1⅜” glass head pins
- Foam core board (at least 2’ x 3’)
- Reducing glass, small binoculars or camera
- Pictures or photos of future projects to discuss
- Tracing paper/white paper to work on future designs
- Optional: Light box



Rasa Read

Rasa has been sewing since she was a young girl. First came doll, then people’s clothing, then quilting was discovered (joy, no fitting!) She loves to apply garment sewing techniques in her quilt making. Now mathematician by day, quilter by night, she obsesses about flat seams, sharp corners, smooth curves and perfect miters.

R3A • Piped Binding by Machine \$40.00

Sunday, 3/20/11

3 hours

8:00 AM – 11:00 AM

All Levels • No Machine

Materials Fee \$3.00

R3B • Piped Binding by Machine \$65.00

Sunday, 3/20/11

6 hours

8:00 AM – 4:00 PM

All Levels • Machine Required

Materials Fee \$3.00

You decide if you need 3 or 6 hours to learn the skill. Sign up for R3A if you want the 3 hour class or R3B if you want the 6 hour class. I will show you how to make perfect piped binding with crisp mitered corners, all of it by machine. Your bindings will be twice as pretty and will take half the time to sew. In the AM hours I will explain and demo all the steps, and you will test drive my sewing machine. In the PM hours you will practice on your machine, and I will help.

Supply List

- A placemat size sample, edges trimmed and all corners 90°
- Sewing machine. It MUST have: (a) pin tuck foot, 5 or 7 groove; and (b) edge-joining foot.
- BSS; BRCT; square ruler MUST have a diagonal mark
- A fine-line marking tool that will show on the binding fabric
- Pre-cut fabric strips for binding

Cutting directions for a sample measuring W” by L”:

- From piping fabric cut: 2 strips measuring 1” wide by W”+2” long and 2 strips measuring 1” wide by L”+2” long
- Fold all 4 piping strips in half lengthwise, press
- From binding fabric cut: 2 strips measuring 3” wide by W”+2” long and 2 strips measuring 3” wide by L”+2” long.





Pat Rollie

Pat has been quilting for over 20 years and completed the Fine Arts and Surface/Textile Design Certificate Programs at Otis School of Art & Design. She received her first national recognition from McCall's Magazine 1990 quilting

competition. Pat expresses her creativity in several mediums, including embellishing with painting and thread painting. Her most noted work is her art quilts. Pat has been recognized as an award winning quilt artist throughout the country. Two of her pieces have appeared in the AQS Calendars 2006 and 2010. Pat's work has been included in the IQF traveling exhibits for the past three years.

PR1 • Quilt Embellishment with Painting Techniques **\$65.00**

Friday, 3/18/11 **6 Hours** **8:00AM – 4:00 PM**
Beginner • Machine Required **Materials Fee: \$8.00**

You don't need to be Picasso to highlight and enhance your quilts with painting and thread embellishments. You will learn basic techniques and develop skills working with fabric dyes, textile paints, marking pens and pencils. You will be delighted at how rather simple techniques bring projects to life. Free motion thread design will add the texture and dimension for a beautiful finish. You will learn to design the thread work and learn free motion quilting techniques. You may not leave with an art masterpiece, but you will have the skills to create one!



Supply List

- Inexpensive acrylic brushes - 1/4 or 1/2" flat, #10 and #5 round
- Plastic plates and two plastic cups
- Paper towels
- 1 plastic trash bag
- Any paint materials you own; more will be provided in class
- Sewing machine with free motion foot
- BSS with a variety of threads
- Paper plates and two plastic cups
- Paper towels
- Paints, pencils, pens and dyes if you have them. Otherwise materials will be available for you to use for a small fee.



Rita Streimer

Rita Streimer teaches quilting in the adult education programs of both the Los Angeles Unified School District and Glendale Community College. She has a Master's degree in Fine Art and has taught art and craft classes at the elementary, secondary and adult levels.

She is an art quilter and has had her work juried into numerous national and international quilt shows.

RS3 • Origami Purses **\$40.00**

Sunday, 3/20/11 **3 hours** **8:00 AM – 11:00 AM**

All Levels • Machine Required
Room: Burbank

Origami is a form of Japanese paper folding that creates fun and different shapes. This technique will be used with cotton fabrics to create a clever three-sectioned purse that can be made in different sizes for different uses. Each purse uses two fabrics, one for the outside of the bag, and one for the lining; and the choices are endless. Batiks, Asian fabrics, medium to large scale florals, etc., work well.

Supply List

- Sewing machine with thread to match fabric.
- BRCT; BSS; Large safety pin.

The 7 1/2" x 7 1/2" drawstring purse requires:

- 2 coordinated FQs
- 1 yd of cording or ribbon for drawstrings.

The 12" x 12" shoulder purse requires:

- 1 yd each of two coordinated fabrics
- 1 yd of 1/4" elastic



SPECIAL EVENT

SNS • Saturday Night Sampler **\$15.00**

Saturday, 3/19/11 **2 hours** **6:00 PM – 8:00 PM**

Room: Pasadena and Burbank

Presenting a medley of talented teachers who share their tricks of the trade in a two hour demonstration-packed session. Participants will move from table to table as they gather lots of information to add to their quilting and sewing skills. A mix of traditional and innovative quilting styles will offer something for everyone. Everyone registering for the Sampler will receive a booklet recapping each demonstration.

Sewing Machine Rental Policy

Sewing machines are available for rent if you choose to leave your machine at home. The fee for rental is \$10.00 per day. You may reserve a rental machine at the time you register for class by marking the appropriate box in Section C of the registration form and paying the rental fee.

Preparing for Class

Bring all listed supplies for each class. If supplies are not listed, none are needed. Irons will be provided. **NO PERSONAL IRONS ALLOWED.** Ask for permission to photograph a class or project. Kit fees are listed alongside class descriptions. Bring kit fee to class and pay directly to the instructor. Do not send the kit fee with your registration.

Abbreviations and Definitions

BRCT = Basic Rotary Cutting Tools: cutter, mat and rulers, both straight edge and square.

BSS = Basic Sewing Supplies: needles, pins, fabric and fine tip embroidery scissors, seam ripper, thread.

FQ = Fat Quarter: a rectangle measuring 22" x 18".



Glendale Quilt Guild
P.O. Box 5366
Glendale, CA 91221-5366

PRESORTED
STANDARD
U.S. POSTAGE
PAID
PERMIT NO. 14954
LOS ANGELES, CA



“Biggest Little Quilt Show in the West”



THE OPPORTUNITY QUILT

Log Cabin Rodeo! — This year’s opportunity quilt was designed in harmony with our western show theme, and we had a smokin’ good time constructing it with you in mind! Our quilt guild is so thankful for having our neighbor and good friends at the “Autry National Center” sponsor our tickets. They have a most generous gift on the opportunity ticket for a two for one special to enjoy this fabulous western museum.

Giddy up and have a rodeo good time!



For additional information email Glendale Quilt Guild at: www.info.@glendalequiltguild.org